



Foam2Foam[®]

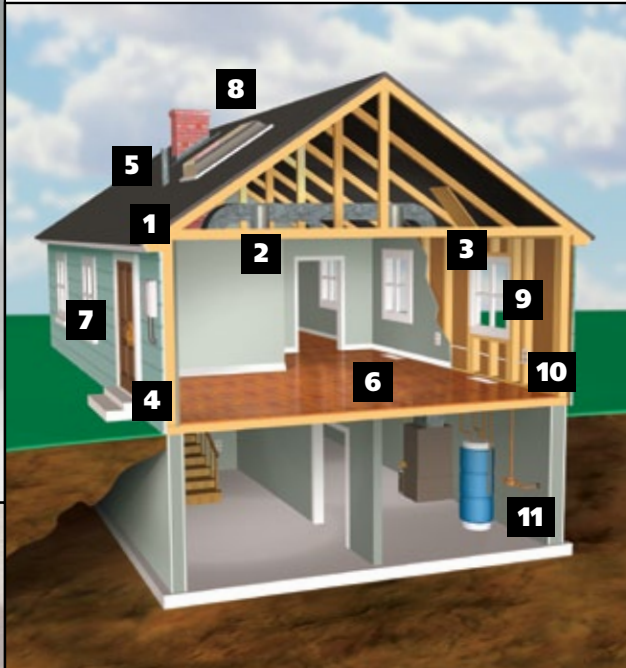
Professional Foam Adhesive



ICF, stucco and EIFs professionals throughout North America prefer Foam2Foam professional foam adhesive over other choices for filling voids, providing sound and thermal insulation and adhering materials.

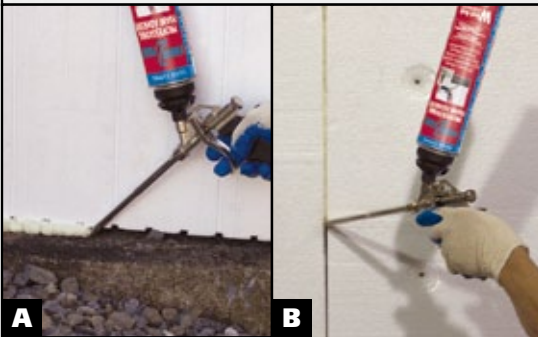
PRODUCT FEATURES

- ▶ ICF foam adhesive
- ▶ EIFS insulation board fill
- ▶ Stone veneer adhesive
- ▶ Drywall adhesive
- ▶ Compatible with EPS



FILLER/SEALER USES

1. Wall and roof intersections
2. Recessed light
3. Attic access
4. Sill plates
5. Water and furnace flues
6. Ducts and vents
7. Door frames
8. Chimney flashing
9. Window frames
10. Electrical outlets and switches
11. Plumbing and utility access



ADHESIVE USES

- A. Adhering foam blocks to footers
- B. Insulation board fill



1055 Leisch's Bridge Road • Leesport, PA 19533
 610-926-6815 • 1-800-872-5625 • Fax: 1-800-854-6614
www.wind-lock.com



Foam2Foam[®]

Professional Foam Adhesive

PRODUCT DESCRIPTION

Quick curing Foam2Foam is a minimal expanding, moisture cured, polyurethane foam with excellent adhesion to most construction materials.

APPLICATIONS

Filling, sealing and insulating of joints, voids, cavities and as a construction adhesive.

INSTALLATION

Read all instructions and safety information (MSDS) before using any product. Foam bonds to skin quickly—wear gloves, eye protection and work clothes during application. Use drop cloths.

Surface Preparation: Surface should be free of oil, grease and excess moisture. Application temperature range is 25–120°F (-4 to 49°C).

Application: Foam2Foam is applied with a gun applicator at the junction of the plate line and the slab or foundation, any penetration through the top or the bottom of the plate line, around window and door frames, cracks and holes in the exterior sheathing from penetration made for utility services, corner and T-wall intersections, and any other place where air might penetrate the exterior envelope.

Storage: Store in cool dry area 50–100°F (10–38°C). Store can in upright position.

Limitations: Foam2Foam professional foam adhesive should not be left permanently exposed to ultraviolet light.

FOAM2FOAM TECHNICAL DATA

Property	Test Method	Value
Basis	—	MDI monomer, polyurethane resin and HCFC blowing agent
Characteristics	—	Rigid
UL Classified	ASTM E-84	Flame Spread 15/Smoke Developed 20
Density	ASTM D-1622	1.1 lb/cu ft
Percent Closed Cell Content	ASTM D-2856	62%
Thermal Resistance (R Value)	ASTM C-518	4.0/in
Compression Strength	ASTM D-1621	5.9 psi
Tensile Strength	ASTM D-1623	17.1 psi
Shear Strength	ASTM C-273	8.0 psi
Water Vapor Transmission	ASTM E-96	10.1/in
Max Service Temperature	—	120°F
Combustion Temperature	—	240°F (116°C)
Minimum Operating Temperature	—	25°F

Yield	Bead Size	Linear Feet
20 oz Can	3/8"	839

Cure Time Estimate	Minutes	
Humidity % RH	Tack Free Time	Cut-Through Time*
50%	10	30

*Based on minimum time to cut through a cured 1" bead.

ORDERING INFORMATION

Foam2Foam

PART CODE: W-F2F (Case of 12 cans)

W-CC9—Contractor's Choice Kit (9 cans of F2F, 1 can of cleaner and 1 foam dispenser)

W-CLF2F—11/1 Convenience Kit (11 cans of F2F, 1 can of cleaner)



Distributed by: