



**WIND-DEVIL® 2**

**EXCLUSIVE PRODUCT**

*For Nearly 3 Decades,  
Still The Most Trusted  
Mechanical Fastening System!*



**Stock to Dock  
Shipping Guarantee**

Products highlighted in yellow are guaranteed to ship within 24 hours or freight costs are **FREE!** Larger orders may require additional lead times. Call for details.

The industry-leading, two-inch diameter Wind-Devil® 2 is by far the most popular and technologically advanced EIFS mechanical fastening system on the market. The patented “bullseye” closure arms allow easy, efficient backing out of any screw, saving time and money.

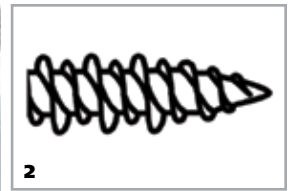
The Wind-Devil® 2 is designed and engineered for use with polymer based (PB) EIFS (Exterior Insulation and Finish Systems). It allows the attachment of EPS insulation to a variety of substrates, including wood, lite metal, steel and masonry. Our witnessed, negative wind-load testing (ASTM-E330) continues to set the industry standard for attaching EIFS.

The Wind-Devil® 2 fastening system is engineered to be utilized in wood, lite metal, steel and masonry substrates and can be applied in any weather condition.

**1. Wind-Devil® 2 Plates**

Call your local distributor for pricing.

Part Code	Qty/Box	Description	Approx Wt/Box
WD-2PLATE	1000	Wind-Devil 2 Plates	10 lb
WD2-PK	500	Wind-Devil 2 Pack	5 lb



**WIND-DEVIL® 2 FASTENERS SERIES SELECTION**

Longer length fasteners are available. See Long-lock, page 8.

**2. Wood and Lite Metal Series Assembled Fasteners (WLMT)**

Assembled fastener and plate for use with dimensional lumber, plywood type sheathings and metal sidings, 20 to 26 gauge.

Part Code	Qty/Box	Insulation Thickness	Screw Size	Approx Wt/Box
WLMT-1	1000	1"	#7 x 1-5/8"	16 lb
WLMT-2	1000	1-1/2"	#8 x 2"	19 lb
WLMT-3	1000	2"	#8 x 2-1/2"	21 lb
WLMT-4	1000	2-1/2"	#8 x 3"	22 lb
WLMT-5	1000	3"	#8 x 4"	25 lb
WLMT-7	500	3-1/2"-4-1/2"	#10 x 5"	20 lb
WLMT-8	500	5"-5-1/2"	#10 x 6"	22 lb

**Wood and Lite Metal Zinc Screw Series Assembled Fasteners (GWLMT)**

Assembled fastener and plate for use with dimensional lumber, plywood type sheathings and metal sidings, 20 to 26 gauge, using our zinc plated UZW screws.

Part Code	Qty/Box	Insulation Thickness	Screw Size	Approx Wt/Box
GWLMT-1	1000	1"	#6 x 1-5/8"	16 lb
GWLMT-2	1000	1-1/2"	#6 x 2"	18 lb
GWLMT-3	1000	2"	#8 x 2-5/8"	21 lb
GWLMT-4	1000	2-1/2"	#8 x 3"	22 lb
GWLMT-5	1000	3"	#10 x 4"	25 lb

**Wood Zinc Screw Series Assembled Fasteners (GWT)**

Assembled fastener and plate for use with dimensional lumber and plywood type sheathings using our zinc plated UZW screws.

Part Code	Qty/Box	Insulation Thickness	Screw Size	Approx Wt/Box
GWT-1	1000	1"	#6 x 1-5/8"	16 lb
GWT-2	1000	1-1/2"	#7 x 2"	19 lb
GWT-3	1000	2"	#8 x 2-1/2"	21 lb
GWT-4	1000	2-1/2"	#8 x 3"	22 lb
GWT-5	1000	3"	#10 x 4"	25 lb

**3. Steel Series Assembled Fasteners (ST)**

Assembled fastener and plate for use with 12 to 20 gauge. Does not take into account sheathing thickness.

Part Code	Qty/Box	Insulation Thickness	Screw Size	Approx Wt/Box
ST-1	1000	1"	#6 x 1-5/8"	16 lb
ST-2	1000	1-1/2"	#6 x 2"	18 lb
ST-3	1000	2"	#8 x 2-5/8"	22 lb
ST-4	1000	2-1/2"	#8 x 3"	24 lb
ST-5	1000	3"	#10 x 4"	32 lb
ST-6	1000	3-1/2"-4"	#10 x 4-3/8"	34 lb
ST-7	500	4"-4-1/2"	#10 x 5"	20 lb
ST-8	500	5"-5-1/2"	#10 x 6"	23 lb
ST-9	500	6"-6-1/2"	#10 x 7"	26 lb
ST-10	500	7"-7-1/2"	#10 x 8"	27 lb

**4. Masonry Series Assembled Fasteners (MT)**

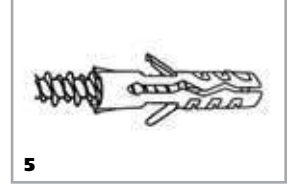
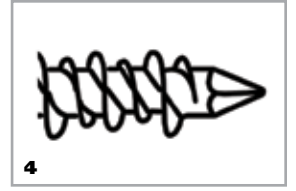
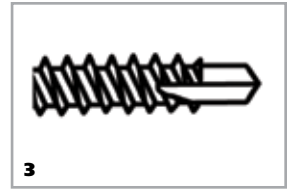
Assembled fastener and plate for use with concrete and other unit masonry. 5 drill bits per 1000 included.

Part Code	Qty/Box	Insulation Thickness	Screw Size	Approx Wt/Box
MT-1	1000	1" only	3/16" x 1-3/4"	21 lb
MT-2	1000	1-1/2"	3/16" x 2-1/4"	26 lb
MT-3	1000	2"	3/16" x 2-3/4"	26 lb
MT-4	1000	2-1/2"	3/16" x 3-1/4"	28 lb
MT-5	1000	3"	3/16" x 4"	31 lb

**5. Masonry Expandable Series Assembled Fasteners (MET)**

Assembled, expandable fastener and plate for use with concrete block, concrete and other unit masonry. Drill bit not included. For MET-1-MET-3 use bit M-S166; for MET-1-MET-7 use bit M-S1612. See page 11 for ordering information.

Part Code	Qty/Box	Insulation Thickness	Screw Size	Approx Wt/Box
MET-1	1000	1" only	3/16" x 2-1/4"	25 lb
MET-2	1000	1-1/2"	3/16" x 2-1/2"	26 lb
MET-3	1000	2"	3/16" x 3"	28 lb
MET-4	1000	3"	3/16" x 4"	30 lb
MET-5	1000	3-1/2"	3/16" x 4-1/2"	19 lb
MET-6	500	4"	#10 x 5"	21 lb
MET-7	500	5"	#10 x 6"	22 lb
MET-8	500	6"	#10 x 7"	25 lb
MET-9	500	7"	#10 x 8"	28 lb



## WIND-DEVIL® 2 TECHNICAL DATA

### WIND-LOAD TEST DATA

#### Wind-Devil® 2

All measurements shown are ultimate pounds per foot.

EPS Thickness	Pattern A	Pattern B	Pattern C
1"	107	88	85
1-1/2"	130	114	103
2"	144	129	124

Witness test reports available.

### GENERAL CORROSION DATA

#### Salt Spray (ASTM-B117)

Finish	Hours to Initial (%) Signs of Red Rust	Hours and Red Rust (%) at Test Conclusion
Phosphate and oil	24 (5% or less)	240 (90-100%)
.0003" electro zinc	48 (5% or less)	240 (75-100%)
.001" hot dip galvanized	98 (5% or less)	320 (75-100%)
Wind-lock® CCS Coating	192 (5% or less)	720 (50-100%)

### FASTENER PULLOUTS

#### WLMT Series

Dimensional lumber/wood sheathings.

Penetration dimensional lumber	1/2"	3/4"	1"	1-1/4"	1-1/2"
Pullout strength	183	304	441	652	731

#### WLMT Series

Lite gauge metal siding.

Nominal gauge	26	25	22	20
Lite Metal pullout strength	*	178	244	277

\*Consult Wind-lock® for pullout (through penetration 1/4" min.).

#### ST Series

Steel/steel studs.

Nominal gauge	24	22	20	18	16	14	12
Steel pullout strength	*	211	296	471	679	847	1225

\*Consult Wind-lock® for pullout (through penetration 1/4" min.).

#### MT Series

Masonry.

Penetration	1"	1-1/4"	1-1/2"	1-3/4"
Concrete pullout strength	380	580	830	1090
Hollow block pullout strength	229	416 <sup>†</sup>	452 <sup>†</sup>	521 <sup>†</sup>

<sup>†</sup>Denotes solid material.

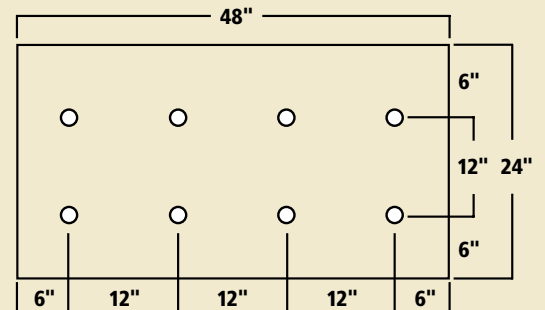
#### MET Series

Masonry expandable.

Concrete pullout strength	378
Hollow block pullout strength	333

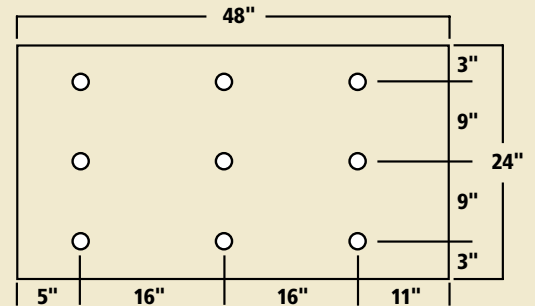
Pullout strengths shown are ultimate values. An appropriate factor of safety must be applied by the user to obtain allowable limits for design. Masonry must be pre-drilled 1/2" deeper than fastener penetration. Hardness of masonry varies and may require a non-standard drill bit. Please consult Wind-lock® for assistance in proper drill bit size. Consult system manufacturer for specific requirements.

### TYPICAL WIND-DEVIL® 2 FASTENING PATTERNS



#### Pattern A

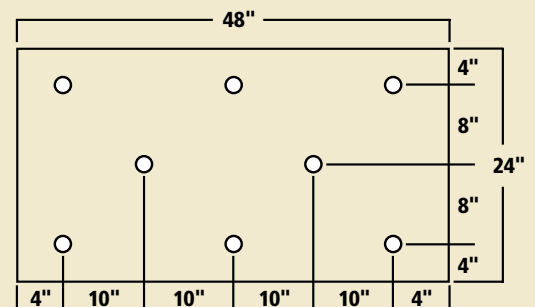
Wood sheathing, masonry and some metal sidings.



#### Pattern B

16" O.C. stud fastening pattern.

NOTE: For pattern "B" stud fastening over non-screwable sheathing, fastener spacing does not exceed 16" O.C. variable not to exceed 11".



#### Pattern C

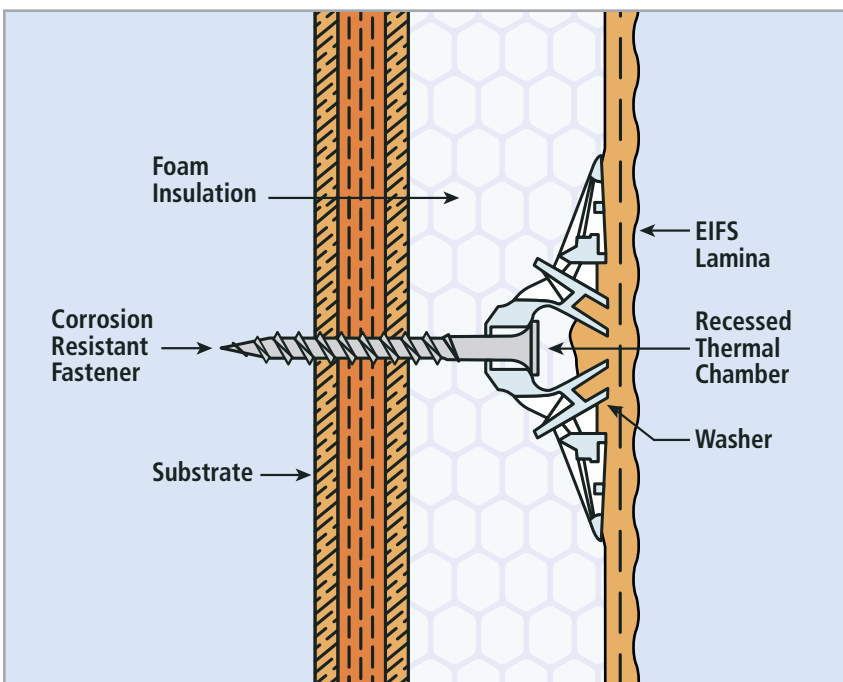
Wood sheathing, masonry and some metal sidings.

**WIND-DEVIL® 2 SELECTION GUIDE**

Insulation Thickness	Wood/Lite Metal Series**	Steel Series	Masonry Series
1"	WLMT-1	ST-1*	MT-1
1-1/2"	WLMT-2	ST-2*	MT-2
2"	WLMT-3	ST-3*	MT-3
2-1/2"	WLMT-4	ST-4*	MT-4
3"	WLMT-5	ST-5*	MT-5
3-1/2"	WLMT-7	ST-6*	
4"	WLMT-7	ST-7*	
4-1/2"	WLMT-7	ST-7*	
5"	WLMT-8	ST-8*	
5-1/2"	WLMT-8	ST-8*	

For virtually any size fastener, contact Wind-lock® or refer to the Long-lock section, Page 8.

\* Sizes are for direct application into steel and do not take into account the sheathing. For 1/2" and 5/8" sheathing, move fastener selection to next higher size.  
 \*\* See page 5 for additional wood (GWT) and lite metal (GWLMT) fasteners.



**Why The Wind-Devil® 2 is Best!**

- Comprehensive witness testing
- Over 20 years of proven performance
- EIFS industry approved
- Significant negative wind-load resistance
- Recessed thermal chamber helps prevent thermal bridging
- Patented closure arms allow for easy “backing” out
- Installation of the Wind-Devil® 2 compresses the foam under the washer forming a “gasket” around the fastener. This gasketing action diverts moisture from the fastener.