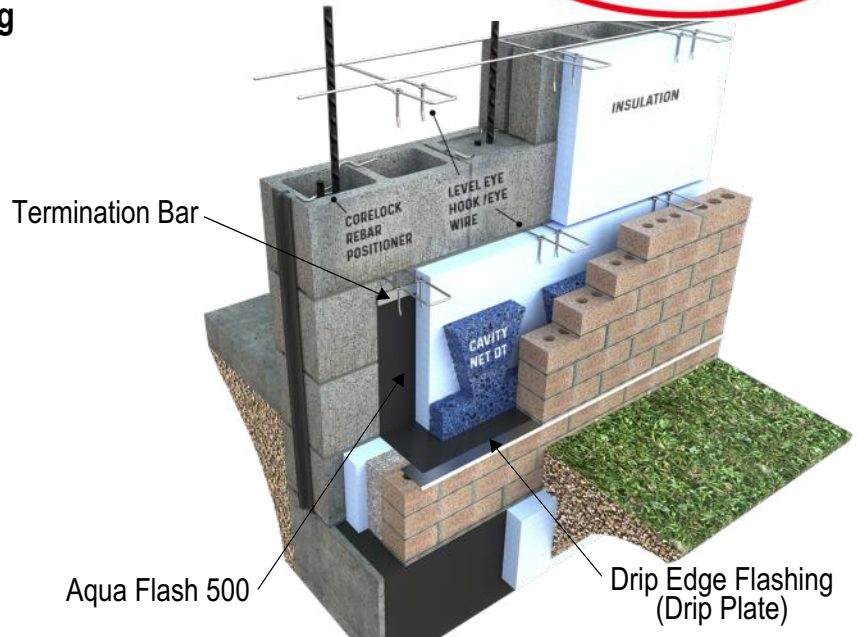


PRODUCT SUBMITTAL

WIRE-BOND

4120 Aqua Flash 500 S.A. Self-Adhering 40 Mil Composite Flashing



Note: A Termination Bar is required for surface-mounted applications.

Description:

A 40 mil composite sheet type membrane consisting of high density cross-laminated polyethylene film (8 mils) bonded to highly adhesive rubberized asphalt (32 mils) with a removable release liner.

Technical Data:

Property	Average Values	Test Method
MVT	0.02 grains max/sq.ft./hr inHG	ASTM E96 Method B
Water Absorption	-1% by weight. Max.	ASTM 0570
Pliability at 180° Bend over 1 / Z Mandrel	to -30 no crack or peel	ASTM 0146
Peel Adhesion (Dry)	0.0 lbs./in., min.	ASTM 0903
Peel Adhesion (Wet)	5.0 lbs./in., min.	ASTM 0903
Lap Adhesion at 25	6.0 lbs./in., min.	ASTM 1876
Elongation	350%	ASTM 0412
Tensile Strength (film)	7000 psi	ASTM 0882
(membrane)	800 psi	ASTM 0412 (Die C Modified)
Puncture Resistance	90 lbs., min.	ASTM E154
Rim	170 lbs., min.	ASTM 0781
Tear Resistance		
Propitiation MO	12.0 lbs.	ASTM 01938
Iniation MO	161 lbs.	ASTM 01004

Features and Benefits

Self-sealing, self-sticking, self-healing whereby the adhesive will elongate and recover if somewhat damaged. Has excellent puncture resistance. Use Aquafash primer and WireBond Flashing Mastic when needed to condition the substrate surface and mastic to seal all laps and joints.

Aqua Flash 500 S.A. Thru-Wall, Concealed, Foundation Sill, Base, Parapet, and Head and Sill flashing. Can be applied to masonry concrete, pre-cast concrete, steel wood and gypsum.

Aqua Flash 500 S.A.

Width: 12" 16" 18" 24" 36" (50 lf rolls)

Accessories:

- #4198R WB Flashing Mastic Sealant - 30 oz. cartridge / 5 gallon pail
- #4121R Aqua Flash Mastic Sealant - 32 oz. cartridge / 5 gallon pail
- #4121W Aqua Flash Primer Water Based - 5 gallon pail
- #4121S Aqua Flash Primer Solvent Based (Winter Grade) - 5 gallon pail

Termination Bar (Required):

- #4200 Stainless Steel #4200 PVC
- #4210 Stainless Steel with Flange Top for Sealant

Stainless Steel Corners & End Dams:

- #4194 End Dam Stainless Steel Flashing
- #4196 Inside Corner Stainless Steel Flashing
- #4196 Outside Corner Stainless Steel Flashing

Drip Edge Plate Flashing: 3" width 1-1/2" width

- #4165 Drip Edge Flashing Stainless Steel (8'-0")
- #4166 Inside Drip Edge Corner Stainless steel Flashing
- #4166 Outside Drip Edge Corner Stainless Steel Flashing

Weeps & Vents: #3601 Cell Vent #3603 Clear Rectangular Vent
 #3602 Louvered Weephole

Mortar Suspension: #3611D Cavity Net DT 1" #3611D Cavity Net DT 2"

Corporate Office: 400 Rountree Rd Charlotte, NC 28217
TEL: (800) 849-6722 FAX: (704) 525-3761

Mailing Address: P.O. Box 240988 Charlotte, NC 28224



www.wirebond.com

Memphis Plant: 2365 Harbor Ave. Memphis, TN 38113
TEL: (800) 441-8359 FAX: (901) 775-9449

Mailing Address: P.O. Box 13124 Memphis, TN 38113