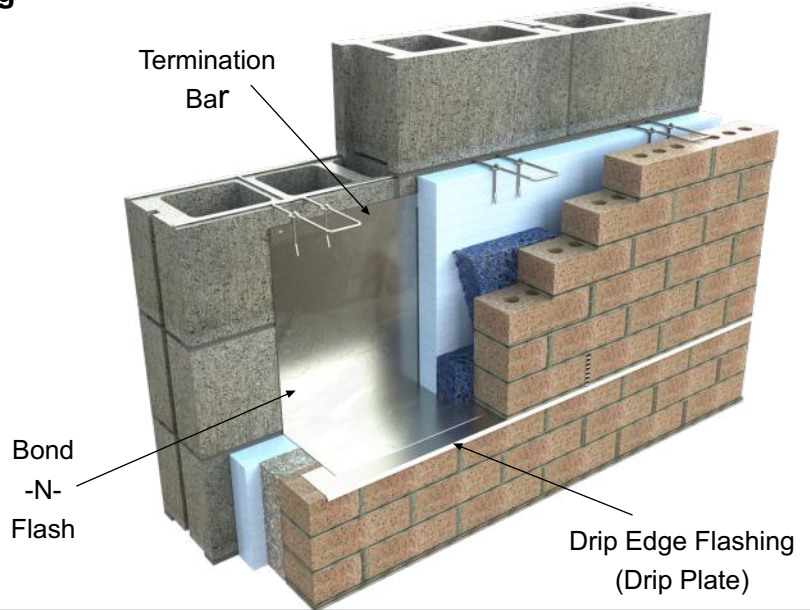
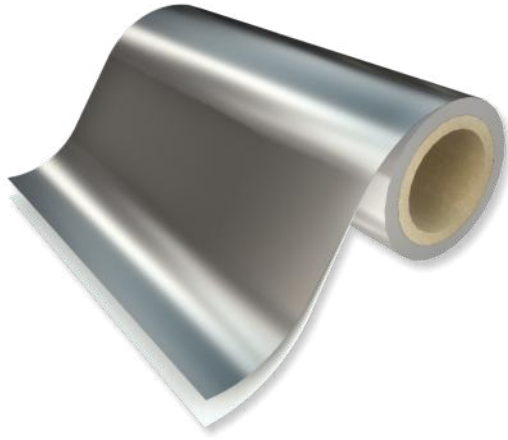


PRODUCT SUBMITTAL



BOND - N - FLASH S.A. (12 mils)

Self-Adhering 304 Stainless Steel Flashing



Note: A Termination Bar is required for surface-mounted applications.

Description:

BOND-N-FLASH S.A. stainless steel composite flashing consists of 2 mils of stainless steel (type 304) bonded to a permanent clear (PSA) adhesive with a removable silicone coated release liner. BOND-N-FLASH S.A. is a self-adhering flashing which can be applied from 20 Degrees F to 180 Degrees F. When necessary, BOND-N-FLASH S.A. is to be applied a part of a system using both BOND-N-FLASH Primer and BOND-N-FLASH Mastic.

Technical Data:

Property	Avg. Values	Test Method
Puncture	2,500 psi	ASTM E154
Tensile Strength	100,000 pas	ASTM D882
Fire Resistance	Class A, Pass	ASTM E84
Mold Resistance	Pass	ASTM 3273
Adhesion	20 lbs/psi	PSTC - 1.1
Stainless Steel certified to meet:		ASTM A240/A240M

Features and Benefits:

- 304 Stainless Steel
- Permanent Adhesive
- Permanent UV Resistance
- Fire Resistant
- Mold Resistance
- High Puncture and Tear Resistance
- Flexible for easy job site formation
- 25 Year Warranty

Applications:

- Thru-Wall Flashing
- Head and Sill Flashing
- Spandrel Flashing
- Roof-Parapet Flashing
- Perimeter Flashing-Curtain Wall
- Base Flashing
- Transition Membrane (Waterproofing, Roofing, Air Barriers)

LEED – EA credit 1 and EQ credit 4.1

BOND-N-FLASH S.A. is compatible with most of the insulations, air barriers, roofing membranes, asphaltic flashings and below grade waterproofing products.

Weight: 2 mils of stainless steel (type 304) bonded to a permanent clear (PSA) adhesive with a removable silicone coated release liner.

Total Thickness: 12 mils

Width: (75 lf rolls)

12" 16" 18" 24" 36"

BOND -N- FLASH Primer - Water Based

5 gallon pail

BOND -N- FLASH Mastic

5 gallon pail

Quik Set Sealant

28 oz. cartridge



BOND -N- FLASH Primer - Solvent Based (Winter Grade)

5 gallon pail

Termination Bar:

Stainless Steel (Type 304)

PVC

#14165 Drip Edge Flashing: 26 gauge Stainless Steel x 8 - 0' (Drip Plate)

1-1/2" width

3" width

Corporate Office: 400 Rountree Rd Charlotte, NC 28217
TEL: (800) 849-6722 FAX: (704) 525-3761

Mailing Address: P.O. Box 240988 Charlotte, NC 28224



Memphis Plant: 2365 Harbor Ave. Memphis, TN 38113
TEL: (800) 441-8359 FAX: (901) 775-9449

Mailing Address: P.O. Box 13124 Memphis, TN 38113