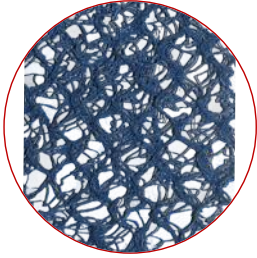


# PRODUCT SUBMITTAL

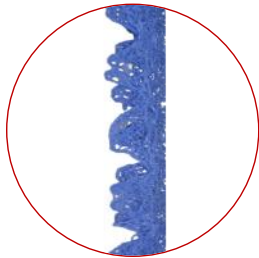
WIRE-BOND

## # 3611 Cavity Net



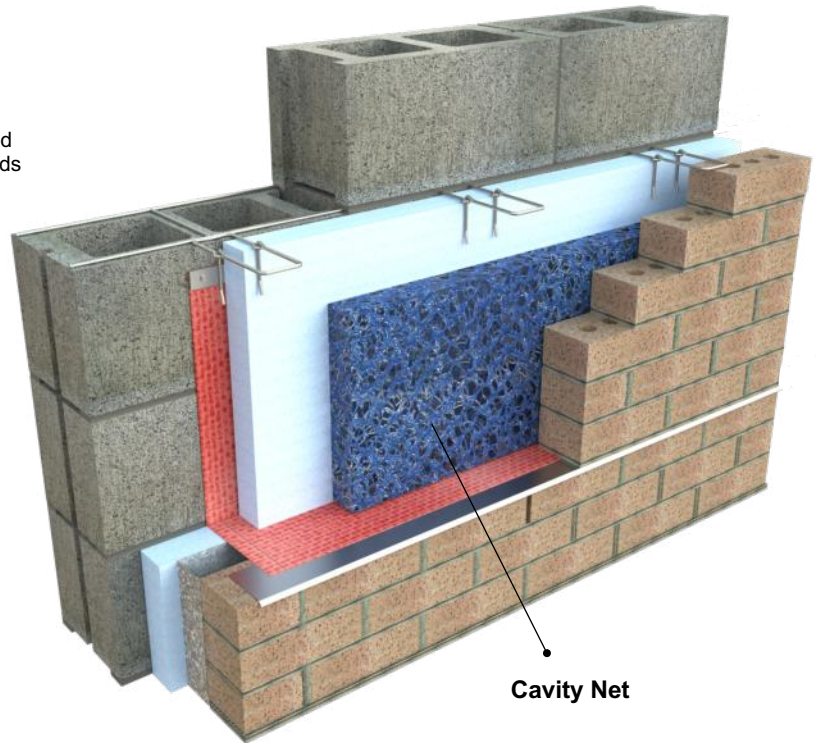
### Cavity Net I

Polymer core geomatrix composed of high density polyethylene strands woven into a .80" thick mesh.



### Cavity Net II

1.5" Thick high density polyethylene geometric design.



Cavity Net

#### MATERIAL CONFORMANCE

#### SIZES / FINISHES

**CAVITY NET I - ASTM D5035** (Polymer core geomatrix composed of high density polyethylene strands woven into a .80" thick mesh.

- Used in cavity walls ranging from 1" to 1-3/4" in width.

**CAVITY NET II - ASTM D5035** 1.5" Thick high density polyethylene geometric design.

- Staggered design suspends mortar droppings and redirects moisture to the exterior by way of the weep holes.
- Slightly narrower design helps avoid any possible bridging of mortar across the cavity.
- Used for cavities 2" and wider

Meets **ASTM D 3273** **ASTM G 21**, for mold growth resistance

#### CAVITY NET I:

.80" Thick  
10" in height  
50 ft per roll  
Packaged 200 ft per box

#### CAVITY NET II:

1.5" Thick  
10" in height  
35 ft per roll  
Packaged 140 ft per box

**Post Consumer** : 0% Recycled Content  
**Post Industrial / Pre Consumer**: 40% Recycled Content



**Corporate Office:** 400 Rountree Rd Charlotte, NC 28217  
TEL: (800) 849-6722 FAX: (704) 525-3761

**Mailing Address:** P.O. Box 240988 Charlotte, NC 28224

WIRE-BOND

[www.wirebond.com](http://www.wirebond.com)

**Memphis Plant:** 2365 Harbor Ave. Memphis, TN 38113  
TEL: (800) 441-8359 FAX: (901) 775-9449

**Mailing Address:** P.O. Box 13124 Memphis, TN 38113