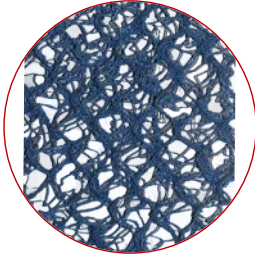


PRODUCT SUBMITTAL

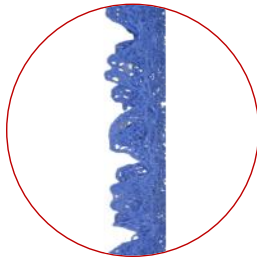
WIRE-BOND

3611 Cavity Net



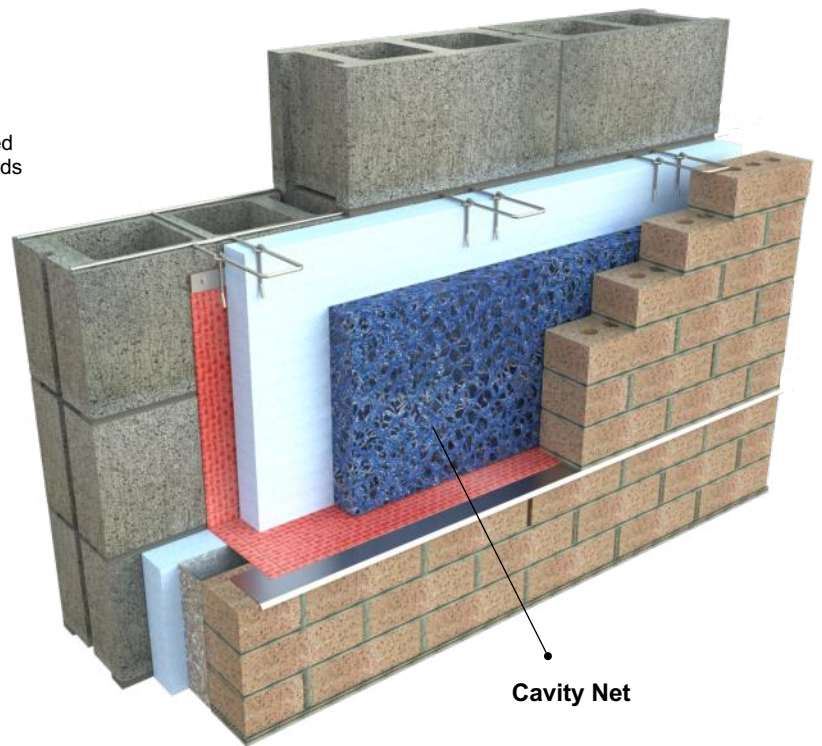
Cavity Net I

Polymer core geomatrix composed of high density polyethylene strands woven into a .80" thick mesh.



Cavity Net II

1.5" Thick high density polyethylene geometric design.



MATERIAL CONFORMANCE

SIZES / FINISHES

CAVITY NET I - ASTM D5035 (Polymer core geomatrix composed of high density polyethylene strands woven into a .80" thick mesh.

- Used in cavity walls ranging from 1" to 1-3/4" in width.

CAVITY NET II - ASTM D5035 1.5" Thick high density polyethylene geometric design.

- Staggered design suspends mortar droppings and redirects moisture to the exterior by way of the weep holes.
- Slightly narrower design helps avoid any possible bridging of mortar across the cavity.
- Used for cavities 2" and wider

Meets **ASTM D 3273** **ASTM G 21**, for mold growth resistance

CAVITY NET I:

.80" Thick
10" in height
50 ft per roll
Packaged 200 ft per box

CAVITY NET II:

1.5" Thick
10" in height
35 ft per roll
Packaged 140 ft per box

Post Consumer : 0% Recycled Content
Post Industrial / Pre Consumer: 40% Recycled Content



Corporate Office: 400 Rountree Rd Charlotte, NC 28217
TEL: (800) 849-6722 FAX: (704) 525-3761

Mailing Address: P.O. Box 240988 Charlotte, NC 28224

WIRE-BOND

www.wirebond.com

Memphis Plant: 2365 Harbor Ave. Memphis, TN 38113
TEL: (800) 441-8359 FAX: (901) 775-9449

Mailing Address: P.O. Box 13124 Memphis, TN 38113