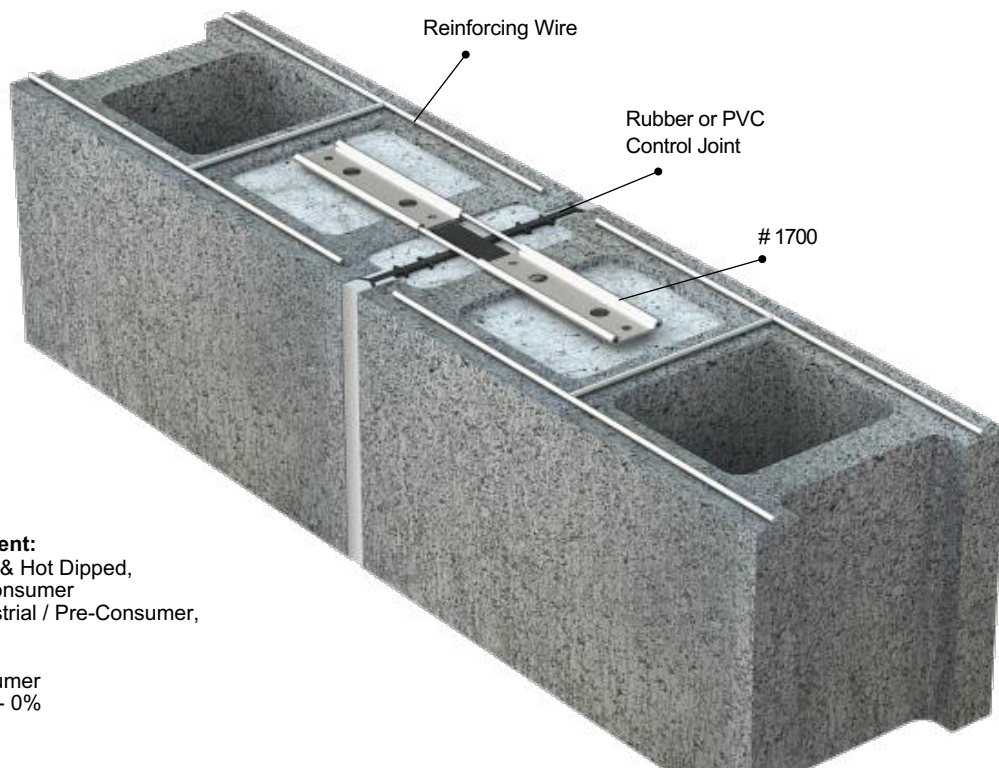
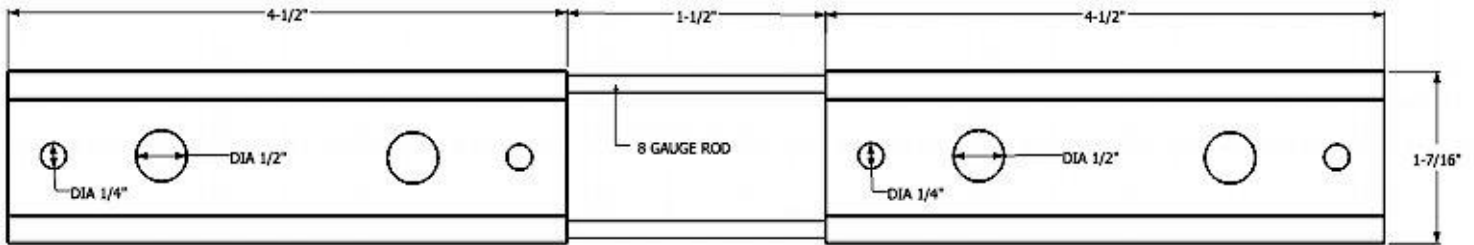


# PRODUCT SUBMITTAL

WIRE-BOND

## # 1700 Control Joint Anchor



### Recycled Content:

Mill Galvanized & Hot Dipped,  
82.8% Post-Consumer  
17% Post Industrial / Pre-Consumer,

Stainless Steel,  
97% Pre-Consumer  
V O C Content - 0%

### MATERIAL CONFORMANCE

**ASTM A1064/A1064M, ASTM A82 / A82M** - (Cold drawn steel wire)  
Tensile Strength - 80,000 psi  
Yield Point - 70,000 psi

**ACI / ASCE 530** - (Building code requirements for masonry structures)

**SHEET METAL** - (Carbon Steel) **ASTM A1008 / A1008M**

Mill Galvanized / Zinc Coating: **ASTM A641 / A641M (0.10 Oz per sq ft)**

Stainless Steel **ASTM 580 / ASTM 580M Type 304** (Type 316 available on special order)

### SIZES / FINISHES

**# 1700 Control Joint Anchor** is designed for transferring loads across control joints while handling compression loads and controlling lateral movement.

#### Standard Dimensions:

18 gauge thick flat steel  
8 gauge diameter rod  
10-1/2" overall length

#### Finishes:

Mill Galvanized

Stainless Steel



**Corporate Office:** 400 Rountree Rd Charlotte, NC 28217  
TEL: (800) 849-6722 FAX: (704) 525-3761

**Mailing Address:** P.O. Box 240988 Charlotte, NC 28224

WIRE-BOND

**Memphis Plant:** 2365 Harbor Ave. Memphis, TN 38113  
TEL: (800) 441-8359 FAX: (901) 775-9449

**Mailing Address:** P.O. Box 13124 Memphis, TN 38113

[www.wirebond.com](http://www.wirebond.com)