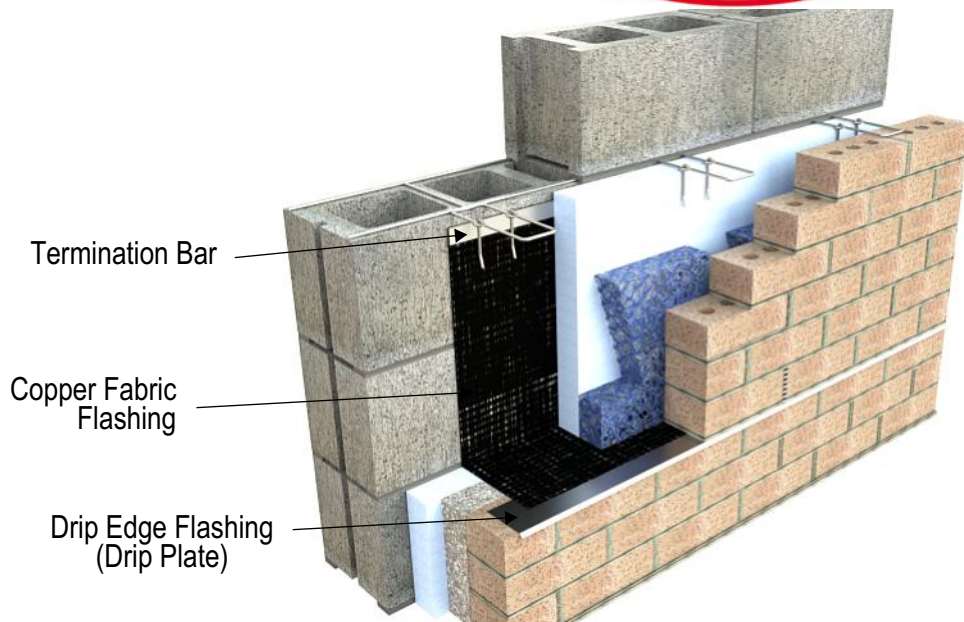


PRODUCT SUBMITTAL

4150 Copper Fabric Flashing

WIRE-BOND



Note: A Termination Bar is required for surface-mounted applications.

Description: Copper Fabric Flashing

- Highest quality laminated copper flashing.
- Two layers of dense glass fabric and special blended asphalt are laminated to copper core to produce greater tensile strength and improved puncture resistance.
- Composition of copper, glass fabric and asphalt will ensure a permanent bond in the mortar joint and protection from moisture.

Use Wire Bond Flashing Mastic to seal all laps and joints.

Copper Flashing is used in masonry construction because it does not react to any alkali or acids that may be found in mortar.

Copper sheet used in the fabrication of copper laminates conforms to ASTM B370 (110 Alloy)

The asphalt-saturated glass fabric adds protection to the copper during shipment, and also adds another layer of waterproofing and chemical resistance.

Light, flexible, and rigid enough to maintain its shape when formed by hand on the job.



Copper Fabric Flashing

- Copper Weight: 3 oz 5 oz 7 oz (sq ft)
3 oz / 5 oz Width: 12 18" 24" (25 lf rolls)
7 oz Width: 12" 18" 24" (25 lf rolls)

Sealant / Primers:

- #4198R WB Flashing Mastic Sealant - 30 oz. cartridge/5 gallon pail (**Required**)
 #4121W Aqua Flash Primer Water Based - 5 gallon pail
 #4121S Aqua Flash Primer Solvent Based (Winter Grade) - 5 gallon pail

Termination Bar: PVC (flat only) Aluminum Stainless Steel

Type: #4200 (flat) #4210 (has Flange Top for Sealant)

Corners & End Dams: Finish: Stainless Steel Copper

#4194 End Dam #4196 Inside Corner #4196 Outside Corner

Drip Edge Plate Flashing: Finish: Stainless Steel Copper

Size: 3" width 1-1/2" width #4165 Drip Edge Flashing (8'-0" Length)

#4166 Inside Drip Edge Corner #4166 Outside Drip Edge Corner

Weep & Vents: #3601 Cell Vent #3603 Clear Rectangular Vent

#3602 Louvered Weephole

Mortar Suspension: #3611D Cavity Net DT 1" #3611D Cavity Net DT 2"

Corporate Office: 400 Rountree Rd Charlotte, NC 28217
TEL: (800) 849-6722 FAX: (704) 525-3761

Mailing Address: P.O. Box 240988 Charlotte, NC 28224

WIRE-BOND

Memphis Plant: 2365 Harbor Ave. Memphis, TN 38113
TEL: (800) 441-8359 FAX: (901) 775-9449

Mailing Address: P.O. Box 13124 Memphis, TN 38113

www.wirebond.com