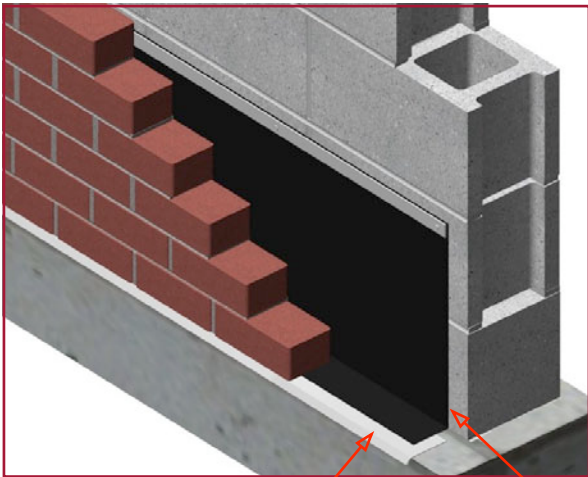


# PRODUCT SUBMITTAL



## EPDM Thru-wall Flashing (Ethylene Propylene Diene Terpolymer)




Drip Edge      EPDM Flashing

DESCRIPTION
EPDM Thru-wall Flashing membrane is a flexible EPDM membrane that forms a moisture retarder in cavity wall construction by redirecting water to a buildings exterior.

TECHNICAL DATA		
PROPERTY	TYPICAL VALUES	TEST METHOD
Tensile Strength:	9.0 MPa (1305 psi)	ASTM D-412 (Die C)
Elongation:	300%	ASTM D-412 (Die C)
Tear Resistance:	26.3 kN/m (150 lbf/in)	ASTM D-624 (Die C)
Ozone Resistance:	No Cracks	ASTM D-1140
	166 hrs/100 pphm @ 37.8°C (104°F) with 50% extension	
Heat Aging:		ASTM D-573
	29 days @116°C (240°F)	
Tensile Strength:	8.3 MPa (1205 psi)	ASTM D-412
Elongation:	200 %	ASTM D-412
Brittleness Temp:	-45°C (-49°F)	ASTM D-2137
Water Absorption:	+8,-2 change in weight after immersion in water for 166 hrs @ 70°C (158°F)	ASTM D-471
Water Vapor Permeability:	2.0 Perm mils	ASTM E-96

Meets ASTM **D4637/D4637M** Specification for EPDM Sheet Used in Single-Ply Roof Membrane

FEATURES	SIZES
<ul style="list-style-type: none"> <li>• Non - staining</li> <li>• Highly resistant to masonry chemicals</li> <li>• Durable</li> <li>• Outstanding elasticity</li> <li>• Flexible to -50°F</li> <li>• Easy to install/full line of installation accessories</li> <li>• Strong resistance to UV &amp; ozone</li> <li>• Puncture and tear resistant</li> </ul>	<p><b>NOMINAL THICKNESS:</b> 40 Mills (1.0mm)</p> <p><b>STANDARD LENGTH:</b> 50 lineal feet per roll</p> <p><b>STANDARD WIDTHS:</b> 12"    16"    18"    24"    36"</p> 

**Corporate Office:** 400 Roundtree Rd Charlotte, NC 28217  
TEL: (800) 849-6722 FAX: (704) 525-3761

**Mailing Address:** P.O. Box 240988 Charlotte, NC 28224



[www.wirebond.com](http://www.wirebond.com)

**Memphis Plant:** 2365 Harbor Ave. Memphis, TN 38113  
TEL: (800) 441-8359 FAX: (901) 775-9449

**Mailing Address:** P.O. Box 13124 Memphis, TN 38113