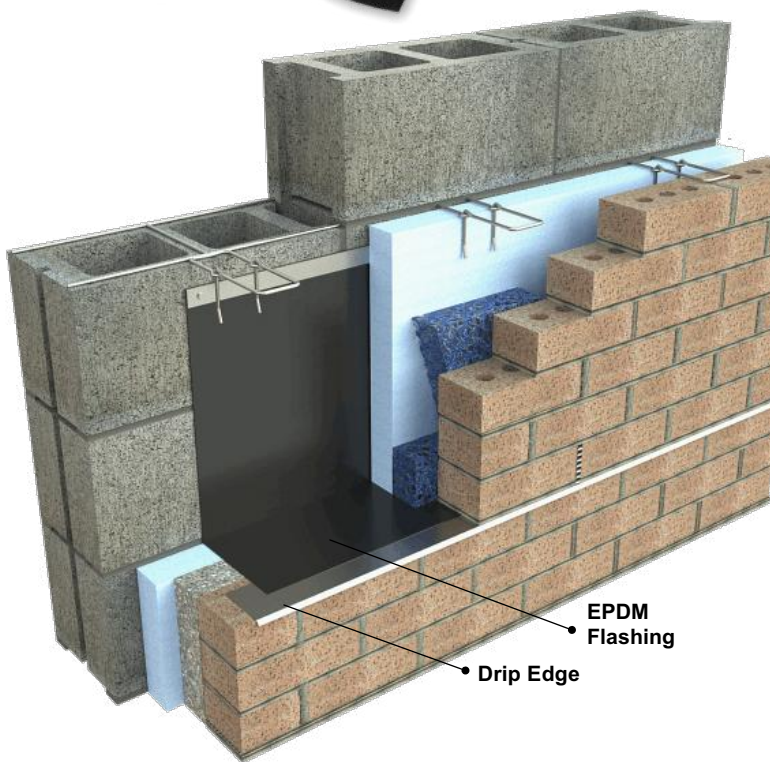
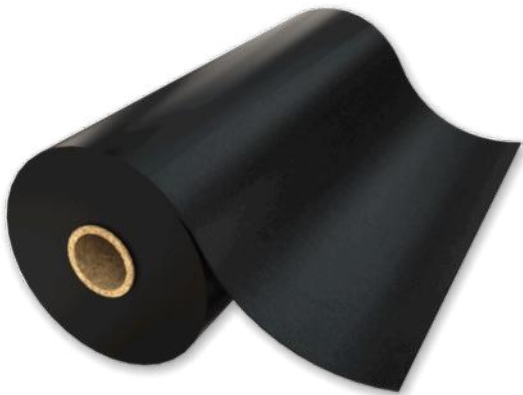


PRODUCT SUBMITTAL

WIRE-BOND

EPDM Thru-wall Flashing (Ethylene Propylene Diene Terpolymer)



Note: A Termination Bar is required for surface-mounted applications.

DESCRIPTION

EPDM Thru-wall Flashing membrane is a flexible EPDM membrane that forms a moisture retarder in cavity wall construction by redirecting water to a buildings exterior.

TECHNICAL DATA

PROPERTY	TYPICAL VALUES	TEST METHOD
Tensile Strength:	9.0 MPa (1305 psi)	ASTM D-412 (Die C)
Elongation:	300%	ASTM D-412 (Die C)
Tear Resistance:	26.3 kN/m (150 lbf/in)	ASTM D-624 (Die C)
Ozone Resistance:	No Cracks	ASTM D-1140
	166 hrs/100 pphm @ 37.8°C (104°F) with 50% extension	
Heat Aging:		ASTM D-573
	29 days @ 116°C (240°F)	
Tensile Strength:	8.3 MPa (1205 psi)	ASTM D-412
Elongation:	200 %	ASTM D-412
Brittleness Temp:	-45°C (-49°F)	ASTM D-2137
Water Absorption:	+8,-2	ASTM D-471
	change in weight after immersion in water for 166 hrs @ 70°C (158°F)	
Water Vapor Permeability:	2.0 Perm mils	ASTM E-96

Meets ASTM **D4637/D4637M** Specification for EPDM Sheet Used in Single-Ply Roof Membrane

FEATURES

- Non - staining
- Highly resistant to masonry chemicals
- Durable
- Outstanding elasticity
- Flexible to -50!
- Easy to install/full line of installation accessories
- Strong resistance to UV & ozone
- Puncture and tear resistant

SIZES

NOMINAL THICKNESS:

40 Mills (1.0mm)

STANDARD LENGTH:

50 lineal feet per roll

STANDARD WIDTHS:

12" 16" 18" 24" 36"



Corporate Office: 400 Rountree Rd Charlotte, NC 28217
TEL: (800) 849-6722 FAX: (704) 525-3761

Mailing Address: P.O. Box 240988 Charlotte, NC 28224



www.wirebond.com

Memphis Plant: 2365 Harbor Ave. Memphis, TN 38113
TEL: (800) 441-8359 FAX: (901) 775-9449

Mailing Address: P.O. Box 13124 Memphis, TN 38113