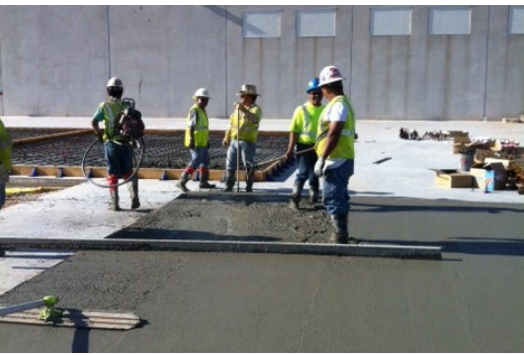


# ADI-CON™ CW PLUS

Easy-to-Use, Waterproofing Admixture for Concrete

A waterproofing powder that is simply added to the concrete mix.



**ADI-CON CW PLUS** is a dry, free-flowing powder containing a blend of inorganic and organic chemicals, a small amount of sand, and silica-based materials.



follow us:

- @wrmeadows
- facebook.com/wrmeadows
- w-r-meadows-inc
- wrmeadowsinc
- YouTube wrmeadowsinc
- #wrmeadows

**ADI-CON CW PLUS** is an integral waterproofing admixture for Portland cement based concrete and mortars. The reactive materials react with lime generated by the hydration reaction of cement and plug the capillary porosity, making concrete watertight under water-head pressure.

#### FEATURES/BENEFITS:

- Chloride-free.
- Provides integral waterproofing.
- Increases chemical resistance.
- Minimal effect on setting times.
- Simple to use.
- Dry powder.
- Economical.

For more information on **ADI-CON CW PLUS** visit [wrmeadows.com](http://wrmeadows.com) or call (800) 342-5976.

  
a Global Provider  
of Innovative Construction Chemicals

