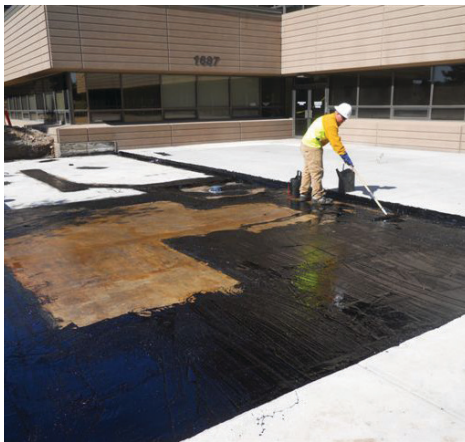




HRM 714

Tough Rubberized Waterproofing Membrane with Superior Flexibility



HRM 714 is hot-applied to form a continuous elastomeric membrane. It is ideal for waterproofing bridge, parking, plaza, or promenade decks; tunnels; pedestrian concourses; and similar types of construction where a monolithic waterproofing membrane is desirable.

follow us:

[@wrmeadows](https://twitter.com/wrmeadows)
facebook.com/wrmeadows
[w-r-meadows-inc](https://www.linkedin.com/company/w-r-meadows-inc)
[wrmeadowsinc](https://www.instagram.com/wrmeadowsinc)
[YouTube wrmeadowsinc](https://www.youtube.com/channel/UCwrrmeadowsinc)
[#wrrmeadows](https://www.youtube.com/channel/UCwrrmeadowsinc)

#SS-44
01/22-1M

HRM 714 hot-applied rubberized asphalt waterproofing membrane is a 100% solids blend of asphalts, synthetic rubber polymers, and filler formulated to provide toughness with flexibility and low moisture vapor permeance.

FEATURES/BENEFITS

- Excellent combination of toughness and low temperature flexibility.
- Very low water absorption and vapor permeance.
- Unique formulation effectively prevents degradation of the rubber content by overheating.
- 0.0 g/L VOC

For more information on **HRM 714**, visit www.wrmeadows.com or call **1-800-342-5976**.



W. R. MEADOWS®
SEALTIGHT®
A Family Company Since 1926
 QUALITY...SERVICE...INTEGRITY