

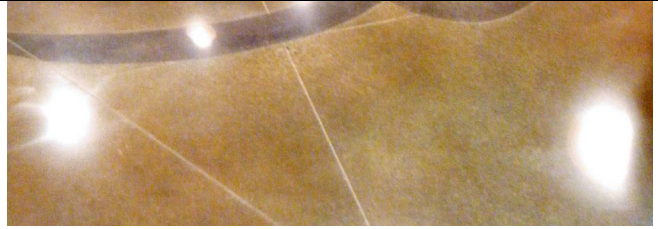
W. R. MEADOWS®

SEALTIGHT®

LIQUI-HARD®

You own your floor forever.

Why would you treat it more than once?



GUARDIAN OF THE PAVEMENT



wrmeadows.com

LIQUI-HARD

You've made a **major investment** in your new concrete floor.

How long do you expect it to last?

You've made a major investment in your facilities and that investment deserves the very best protection available.

There's only one company that has consistently helped owners improve the protection of their floors against:

- **Chemical attack**
- **Staining**
- **Permeable fluids**
- **Wear and degradation**

For over 90 years, **W. R. MEADOWS** has been recognized as the leader in developing and producing the highest quality products for concrete performance. We have build a coveted reputation among architects, engineers, and contractors for producing the highest quality products backed by 90+ years of experience.

What is **LIQUI-HARD**?

LIQUI-HARD concrete densifier and chemical hardener compound is a ready-to-use, colorless liquid, made of proprietary reactive chemicals that deeply penetrate the surface of concrete. Through a chemical reaction process, LIQUI-HARD penetrates progressively through the concrete and chemically solidifies it into a homogeneous concrete mass. The unique blend of chemically reactive raw materials provides the highest level of protection for your concrete as proven by independent test results.

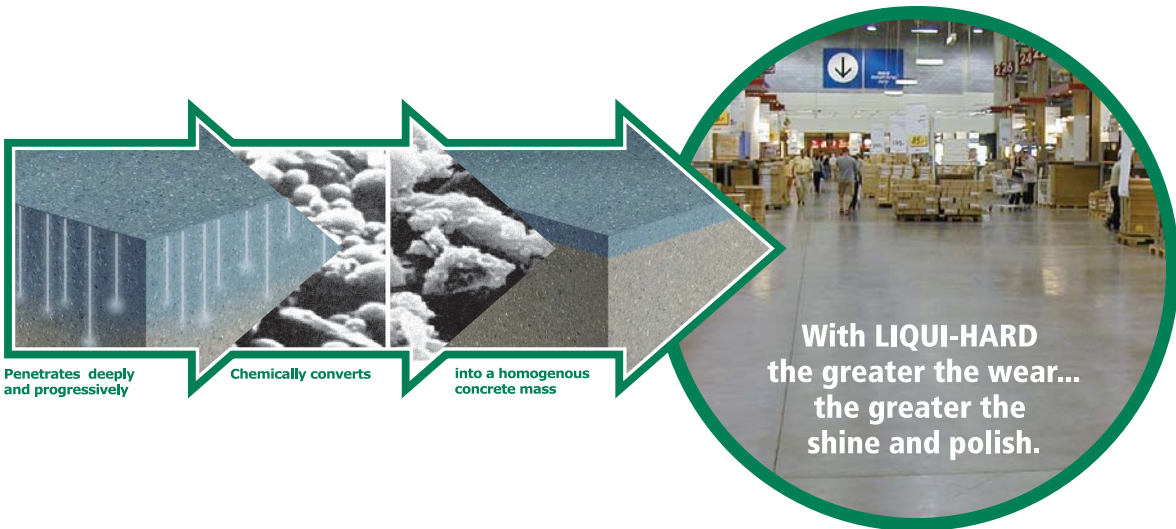


- Penetrates into concrete to densify and harden surfaces to help reduce entry of moisture and other foreign matter.
- Dustproofs and improves chemical and abrasion resistance of treated surfaces when compared to uncreated concrete.
- Provides a permanent sheen with the ability to polish.

The LIQUI-HARD Process

The “weak link” in your floor is the cement used to bind aggregate together. Cement alone has poor compressive strength and low wear resistance. On your floor, the effects of carbonation and the weakening of the surface of the concrete due to exposure to carbon dioxide and moisture can cause dusting and premature degradation.

LIQUI-HARD, when used on a concrete surface, penetrates progressively through the concrete surface and converts the weak calcium hydroxide and other available calcium ions in the concrete into calcium silicate hydrate (CSH), producing a hard, dense and sealed surface.



Benefits

Untreated

Treated

Reduced permeability and staining

Increased abrasion resistance

Self-polishing, reduces marking

Expedite the polishing process by burnishing

Increased light reflectivity indoors and out

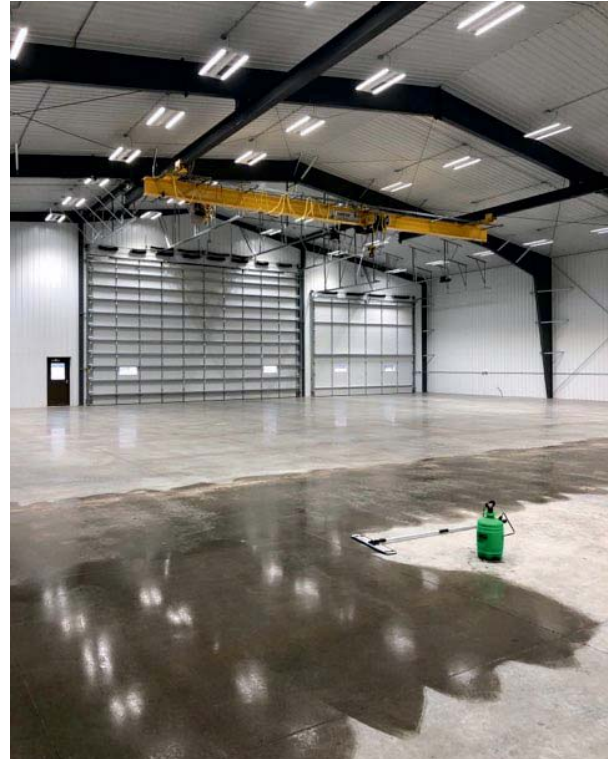


LIQUI-HARD ULTRA

In addition to LIQUI-HARD, W. R. MEADOWS offers LIQUI-HARD ULTRA, molecular concrete densifier and chemical hardener. LIQUI-HARD ULTRA offers all of the great features and benefits of the standard LIQUI-HARD product, but is formulated using lithium-silicate-based technology. This formulation offers a quick and easy, hassle-free application procedure that does not require flushing or rinsing.

BELLATRIX

BELLATRIX hardened concrete floor enhancer is formulated using dual-protection technology combined with unique hybrid polymers to offer the ultimate in concrete protection. Proprietary, dual-action technology provides the ultimate in both penetrating and film-forming concrete protection. BELLATRIX offers VOC-compliant protection, which provides increased stain suspension and resistance against most contaminants found in kitchens, retail food stores, restaurants, malls, garages, warehouses, distribution centers, etc.



While originally formulated to be used in conjunction with hardened concrete floor systems, such as LIQUI-HARD and LIQUI-HARD ULTRA, BELLATRIX may also be utilized anywhere a clear, high-gloss, dual-action concrete protection system is desired. BELLATRIX is designed for use on previously sealed surfaces, as well as surfaces that have been previously stained or dyed and sealed.



LIQUI-HARD Ideal Applications

LIQUI-HARD is recommended for use wherever hardened, dustproofed, and improved chemical- and abrasion-resistant surfaces are required. Ideal applications include:

- Industrial plants
- Warehouses
- Storage silos
- Sewage plants
- Chemical processing facilities
- Refineries
- Civic centers
- Sports arenas
- Stadiums
- Hospitals
- Airports
- Museums
- Food processing



What about the ENVIRONMENT?

Through 90+ years of research and development, W. R. MEADOWS has recognized the need for, and subsequently produced, environmentally friendly products to meet all types of building needs.

By using VOC-compliant LIQUI-HARD from W. R. MEADOWS, you gain the prestige and peace of mind that goes along with utilizing quality materials, while at the same time considering the environment, worker safety, and ease of application.



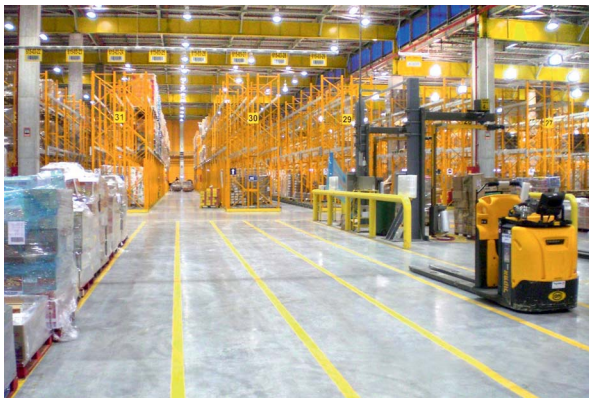
ProLogis Building - Gyal, Hungary - 194,000 sq. ft.



BOE G6 TFT-LCD Manufacturing Facility - Hefei, Anhui, China - 200,000 sq. ft.



Nestle Factory - Airport City, Israel - 390,000 sq. ft.



Mercedes-Benz Manufacturing Plant - Kecskemet, Hungary - 1.8 million sq. ft.



Havasu Air Center - Lake Havasu City, Arizona - 80,000 sq. ft.

This is a burnished floor application using BELLATRIX and LIQUI-HARD.



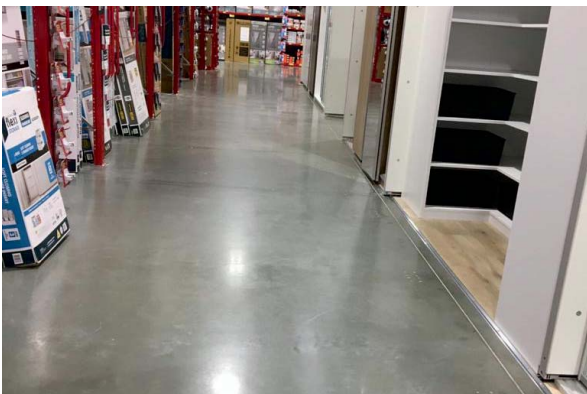
Cummins China Emission Solutions Plant - Beijing, China - 100,000 sq. ft.



Webasto Manufacturing Facility - Beijing, China - 20,000 sq. ft.



Bunnings - Adelaide, Australia - 98,000 sq. ft.



W. R. MEADOWS®

SEALTIGHT®

Guardian of the Structure



#wrmeadows

W. R. MEADOWS, INC.

P.O. Box 338 • Hampshire, IL 60140-0338
Phone: 847/214-2100 • Fax: 847/683-4544
1-800-342-5976

www.wrmeadows.com • info@wrmeadows.com

HAMPSHIRE, IL / CARTERSVILLE, GA / YORK, PA
FORT WORTH, TX / BENICIA, CA / POMONA, CA
GOODYEAR, AZ / MILTON, ON / SHERWOOD PARK, AB

PRINTED IN U.S.A.

#BR-1

07/20-5M