

W. R. MEADOWS®

SEALTIGHT®

A Family Company Since 1926

QUALITY...SERVICE...INTEGRITY

INSTALLATION GUIDELINES

MEL-ROL®

This document has been created as an addendum to the MEL-ROL technical data sheet to provide the recommended procedure to use when installing MEL-ROL self-adhesive waterproofing membrane from W. R. MEADOWS. The guide will cover recommended tools to use, surface preparation prior to membrane installation, and the membrane installation on both vertical and horizontal surfaces.

TOOLS RECOMMENDED

- Utility knife
- Chalk line
- Stiff bristle broom
- 6' (1.8 m) broom handle or equivalent
- 1.5" (38.1 mm) or 2" (50.8 mm) margin trowel
- Medium nap (3/8" - 1/2") lambswool paint roller
- Tape measurer
- Gloves (solvent-resistant)
- Screwdriver
- Small diamond point trowel
- 35 lb. or heavier linoleum roller
- Hammer
- Rags
- Cleanup solvent similar to xylene or toluene or SEALTIGHT CLEANER or SEALTIGHT SOLVENT from W. R. MEADOWS

The above tools are enough to perform a proper installation; however, more tools may be used.

W. R. MEADOWS MATERIALS NEEDED

- MEL-ROL self-adhesive waterproofing membrane
- MEL-PRIME, MEL-PRIME N.E., or MEL-PRIME W/B adhesive
- DETAIL STRIP
- POINTING MASTIC
- BEM
- PC protection board and/or MEL-DRAIN drainage board
- MEADOW-CRETE GPS
- MEADOW-PATCH 20



SURFACE PREPARATION

Concrete should be cured at least 72 hours, be clean, dry, smooth, and free of voids. Repair spalled areas; fill all voids and remove all sharp protrusions. Apply in dry, fair weather when the air and surface temperature are above 40° F (4° C). Do not apply to frozen concrete. MEL-ROL LOW TEMP can be used when air and surface temperatures are between 20° F (-7° C) and 60° F (16° C),

Apply MEL-PRIME adhesive to surfaces that will be covered within one working day. If left exposed overnight, additional adhesive must be applied. Follow all instructions and precautions on containers.

MEL-ROL can be applied to concrete, masonry surfaces, wood, insulated wall systems, and metal. All substrates must be clean, dry, and free of all surface irregularities.

Masonry walls may require the application of a cementitious parge-coat. Allow the parge-coat to dry before priming and applying MEL-ROL. When applied, the parge-coat will produce a smooth, uniform, and well-bonded surface. Apply MEL-PRIME to all areas to receive MEL-ROL.

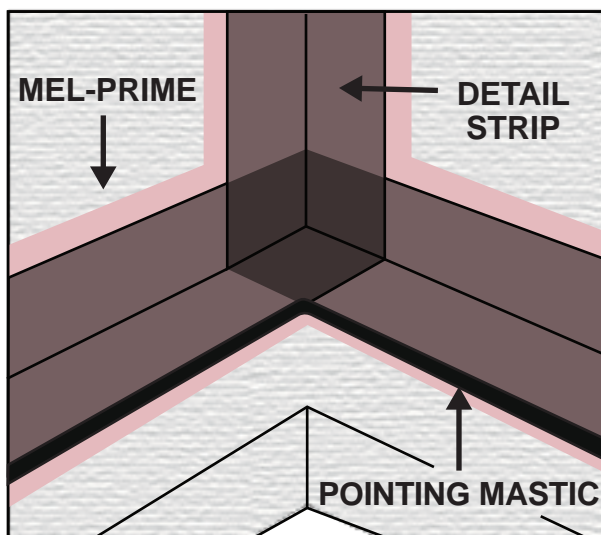
W. R. MEADOWS, INC. | P.O. Box 338 | HAMPSHIRE, IL 60140-0338
Phone: 847/214-2100 | Fax: 847/683-4544 | www.wrmeadows.com

INSTALLATION GUIDELINES MEL-ROL®

DETAILING

INSIDE CORNERS

Before MEL-ROL is applied, place a vertical **DETAIL STRIP** on inside corners extending the material 4 ½" (114.3 mm) beyond each side of the corner. Terminate at the footing and finish the corner with **POINTING MASTIC**.



OUTSIDE CORNERS

Bend **DETAIL STRIP** vertically over the outside corner and extend 4 ½" (114.3 mm) beyond each side of the corner. Terminate the material at the footing. Finish the corner with **POINTING MASTIC**.

DRAINS AND PROTRUSIONS

All protrusions should be sealed by forming a collar of **MEL-ROL** or **DETAIL STRIP** applied at least 3" (76.2 mm) in all directions. Seal all terminations with **POINTING MASTIC**. Around drains, apply in the same method and put a bead of **POINTING MASTIC** between the membrane and clamping rings at all terminations, drains, and protrusions.



FOOTING DETAILS

Fill 90° interior angles with a cove of **BEM**. Apply **MEL-PRIME** in all the inside and outside corners prior to installing **DETAIL STRIP**. Install **DETAIL STRIP** 4 ½" (114.3 mm) up the wall and 4 ½" (114.3 mm) on the footing. Extend the material 4 ½" (114.3 mm) beyond outside corners. Slit extended portion of **DETAIL STRIP** lengthwise. Place the horizontal flap out onto the footing and bend the vertical flap around the wall. Repeat this procedure in the opposite direction. Apply a bead of **POINTING MASTIC** on the exposed edge of installed **DETAIL STRIP** at footing. Please note: use **POINTING MASTIC** in place of **BEM** when using **MEL-ROL XLT**.



W. R. MEADOWS®

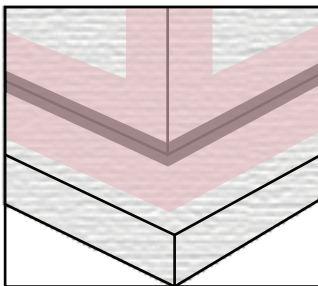
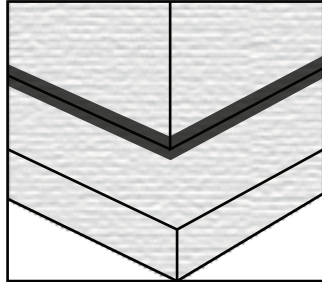
SEALTIGHT®

A Family Company Since 1926

QUALITY...SERVICE...INTEGRITY

INSTALLATION GUIDELINES MEL-ROL®

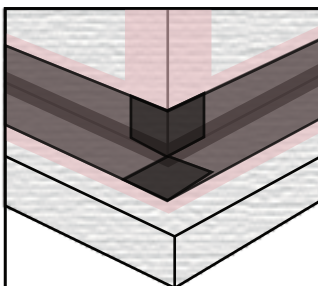
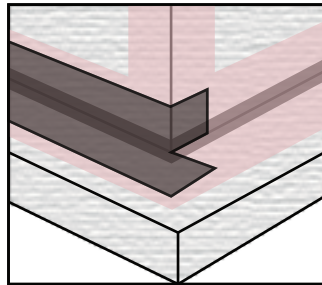
1. Cove of BEM



2. MEL-PRIME



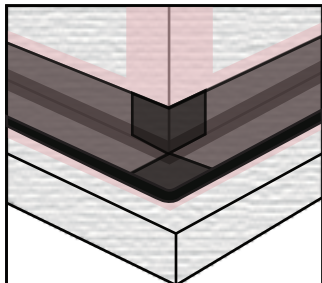
3. 1st DETAIL STRIP



4. 2nd DETAIL STRIP



5. POINTING MASTIC



VERTICAL WALL APPLICATION

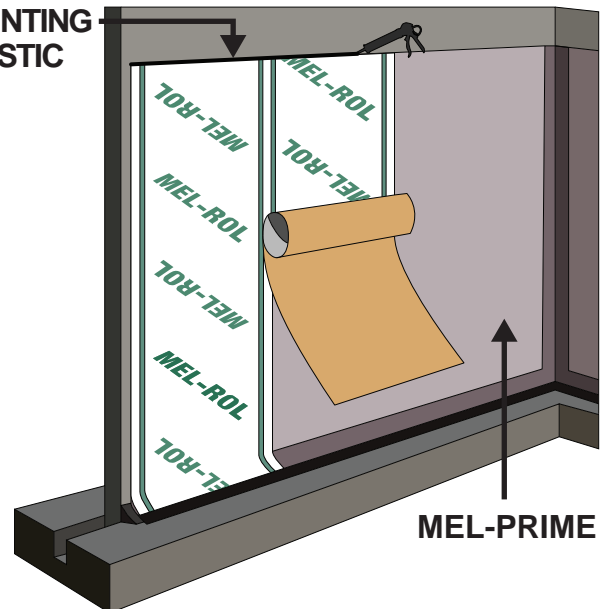
Remove the release paper, then apply vertically in lengths approximately 8' (2.44 m) long over the top of the horizontal DETAIL STRIP at the footing. Overlap the seams at least 2 1/2" (63.5 mm). Tightly butt edges of membrane and apply POINTING MASTIC in corner applications.

To aid in a proper overlap, position the membrane so that it covers the "W. R. MEADOWS" wording running along the edge.

Apply POINTING MASTIC to the top terminations at least 1/8" (3.18 mm) thick and 1" (25.4 mm) wide. As an option, TERMINATION BAR may be used to fasten and membrane mechanically.

Once positioned, immediately hand-rub the MEL-ROL membrane firmly to the surface removing any bubbles or wrinkles, then pressure roll the complete surface to assure positive adhesion. Apply POINTING MASTIC to the leading edge of the membrane at the end of each working day.

POINTING MASTIC



W. R. MEADOWS, INC. | P.O. Box 338 | HAMPSHIRE, IL 60140-0338

Phone: 847/214-2100 | Fax: 847/683-4544 | www.wrmeadows.com

W. R. MEADOWS®

SEALTIGHT®

A Family Company Since 1926

QUALITY...SERVICE...INTEGRITY

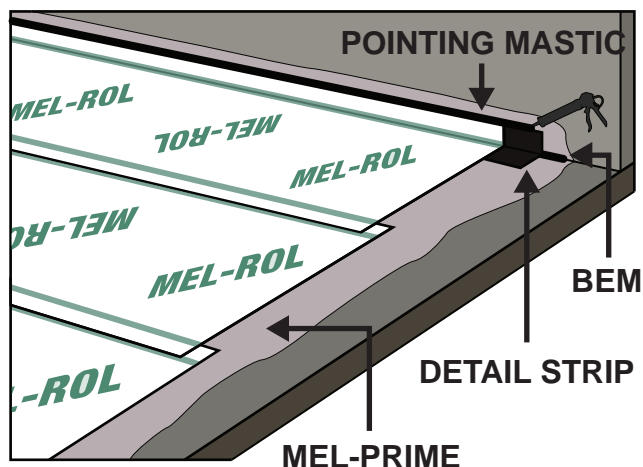
INSTALLATION GUIDELINES MEL-ROL®

HORIZONTAL APPLICATION

Remove the release paper on the edge, then position the MEL-ROL membrane. Pull the balance of the release paper off, running the roll from low to high points so that all the laps will shed water. Stagger end laps and overlap all seams at least 2 ½" (63.5 mm). All terminations of MEL-ROL must be detailed with a bead of POINTING MASTIC. Apply a double-thickness of the MEL-ROL membrane over construction, control, and all expansion joints and cracks greater than 1/16" (1.59 mm) wide.

Once positioned, immediately hand-rub the MEL-ROL membrane firmly to the surface removing any bubbles or wrinkles. Pressure roll the complete surface to assure positive adhesion.

A thorough inspection should be made before covering and all necessary repairs made immediately. Tears and inadequate overlaps should be covered with MEL-ROL. Slit fish mouths and patch. If flooding test is required, allow a minimum of 24 hours following the membrane installation. Flood testing should be performed accordingly to ASTM D5957.



INSPECT AND REPAIR

A thorough inspection should be made before covering and all necessary repairs made immediately. Tears and inadequate overlaps should be covered with MEL-ROL. Slit fish mouths and patch. Seal edges of all patches with POINTING MASTIC. Where applicable, horizontal applications can be flood-tested for 24 hours. All leaks should be marked and repaired when membrane dries.

PROTECT THE MEMBRANE

Immediately apply PROTECTION COURSE on all vertical and horizontal installations if no drainage system is used, or apply MEL-DRAIN. To secure PROTECTION COURSE, use POINTING MASTIC as an adhesive, and/or physically attach at the top edge using TERMINATION BAR.

When using MEL-DRAIN on a vertical wall application, align the first roll and mechanically fasten in place. Roll MEL-DRAIN down the wall, overlapping the footing. Continue MEL-DRAIN installation to cover installed MEL-ROL. Pull away the fabric layer of MEL-DRAIN to expose dimples. Install drainage tile and wrap excess fabric over the drainage tile. Install TERMINATION BAR and fasted at 12" on center to hold MEL-DRAIN in place and apply a bead of POINTING MASTIC on the top edge of the TERMINATION BAR.



W. R. MEADOWS, INC. | P.O. Box 338 | HAMPSHIRE, IL 60140-0338
Phone: 847/214-2100 | Fax: 847/683-4544 | www.wrmeadows.com

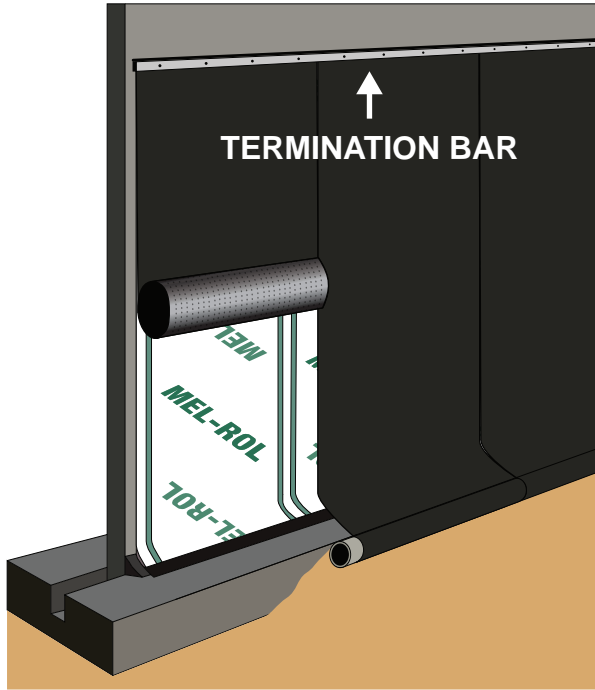
W. R. MEADOWS®

SEALTIGHT®

A Family Company Since 1926

QUALITY...SERVICE...INTEGRITY

INSTALLATION GUIDELINES MEL-ROL®



Backfilling should be done immediately, using care and caution to avoid damaging the waterproofing application.

PRECAUTIONS

Avoid the use of products that contain tars, solvents, pitches, polysulfide polymers, or PVC materials that may come into contact with MEL-ROL. The use of MEL-ROL does not negate the need for relief of hydrostatic heads. A complete drain tile system should be placed around the exterior of footings and under slabs, as required.



W. R. MEADOWS, INC. | P.O. Box 338 | HAMPSHIRE, IL 60140-0338
Phone: 847/214-2100 | Fax: 847/683-4544 | www.wrmeadows.com