



CEMENTITIOUS WATERPROOFING

Advanced Cementitious Waterproofing Technology



Whatever your needs...
we have the solution.



CEM-KOTE™ CW PLUS

CEM-KOTE CW PLUS is a second generation crystalline waterproofing material. Its dual waterproofing action combines conventional crystalline waterproofing with a membrane waterproofing mechanism, producing extremely fast activation – a few days rather than weeks that are the norm for an old style crystalline waterproofing. CEM-KOTE CW PLUS also provides a very tough, hard and well-bonded surface with high abrasion and impact resistance. It can be used for negative and positive waterproofing as a brush- or spray-applied slurry. CEM-KOTE CW PLUS is approved for potable water applications under the ANSI/NSF Standard 61 – Drinking Water System Components.

- A) Military project, Montana
- B) South ferry station, New York
- C) Water tank, Digby, Nova Scotia, Canada
- D) Wet well, California



CEM-KOTE™ FLEX CR

CEM-KOTE FLEX CR is a unique, flexible waterproofing, cement-based membrane, designed for protection of concrete exposed to sulfuric acid formed in environments with a high hydrogen sulfide concentration. CEM-KOTE FLEX CR is used in the repair and protection of digesters in wastewater treatment facilities, sewer systems, pumping (lift) stations, and other areas exposed to chemical attack. Insensitive to substrate moisture during application, the product is easily applied by brushing or spraying. CEM-KOTE FLEX CR has been extensively proven in many applications around the world.

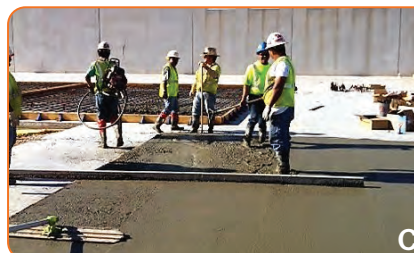
- A) Clarifier, Pascani, Romania
- B) Clarifier, Windsor, Canada
- C) Digester, Toronto, Canada
- D) Sewer manhole, Manitoba, Canada



ADI-CON™ CW PLUS

ADI-CON CW PLUS is an integral waterproofing admixture for Portland cement based concrete and mortars. The product is a dry, free flowing powder containing a blend of inorganic and organic chemicals, a small amount of sand and silica based materials. The reactive materials react with lime generated by the hydration reaction of cement and “plug” the capillary porosity, making concrete watertight under water head pressure.

- A) Botosani, Clarifier, Romania
- B) Bratislava parking garage, Slovakia
- C) Concrete slab, Oklahoma
- D) Vladivostok foundations, Russia



CEMENTITIOUS WATERPROOFING

GEMITE®

The GEMITE line of cementitious coatings is designed to protect reinforced concrete structures in two ways - against chemical attack and as a waterproofing membrane. CEM-KOTE products are designed to withstand negative or positive pressures, making it an ideal waterproofing choice for below grade structures, including wastewater treatment facilities, water retaining structures, and concrete tanks and tunnels. Formulations for potable water applications meet the ANSI/NSF Standard 61 – Drinking Water System Components. CEM-KOTE materials can be sprayed or hand applied.

CEM-KOTE FLEX ST in potable water and CEM-KOTE FLEX CR in waste water facilities may effectively replace currently used polymer coatings in certain applications. "In place" costs of CEM-KOTE FLEX ST or CEM-KOTE FLEX CR are more cost effective than polymer coatings costs. Unlike polymer coatings, they do not require a dry concrete substrate during application and are insensitive to high humidity environments. They also will not de-bond due to moisture presence at the concrete/coating interface, may bridge nominal substrate cracks, and are easy and fast to apply.

CEM-KOTE™ FLEX ST

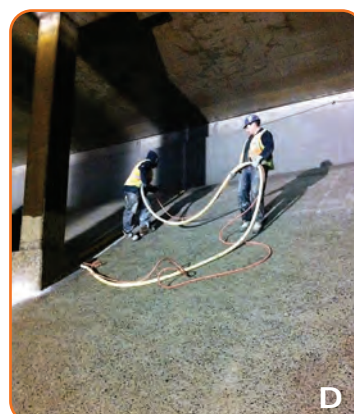
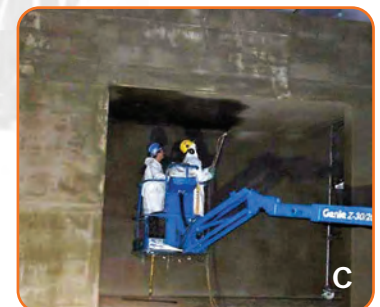
CEM-KOTE FLEX ST is a flexible, polymer-modified cement membrane, which can be easily applied by brushing or with spray equipment for larger applications. The product is used for waterproofing of potable water or wastewater treatment facilities in new construction or restoration projects. CEM-KOTE FLEX ST is ANSI/NSF 61 Standard approved. The key advantages of CEM-KOTE FLEX ST are its flexibility, excellent adhesion, crack-bridging, and easy application to wet (even to completely water saturated) concrete. The breathable CEM-KOTE FLEX ST membrane allows substrate moisture to escape. Unique REINFORCING FABRIC NW and HD is used to provide spanning and waterproofing of larger cracks. CEM-KOTE FLEX ST can be used for both – Negative / Positive side waterproofing of concrete structures.

Other CEM-KOTE FLEX ST Uses:

- Potable & Wastewater Treatment Plants
- Garages & Basements (Negative side waterproofing walls & slabs)
- Elevator Shafts
- Balcony & Deck Waterproofing
- Tunnels
- Marine Structures
- Swimming Pools & Fish Tanks

*CEM-KOTE FLEX ST is also able to receive decorative treatments, such as concrete stains, integral color, and sealers.

- A) Carson floor waterproofing, Nevada
- B) Grey water tanks in Marina Heights, Arizona
- C) Potable water tank in Toronto, Ontario
- D) Potable water tank in Vancouver, Canada
- E) Waste water treatment facility, California





CEMENTITIOUS WATERPROOFING

Ideal applications:

- Water Treatment Plants
- Sewage Treatment Plants
- Bridges
- Dams
- Railway & Subway Systems
- Marine Cargo Ports & Docks
- River Locks/ Channels & Concrete Dykes
- Parking Structures & Lots
- Tunnels



If you need more information on our complete line of infrastructure improvement products, here are four quick and easy access points:

- Visit our comprehensive website: www.wrmeadows.com
- Contact W. R. MEADOWS, INC. via email: info@wrmeadows.com
- Call toll free: (800) 342-5976
- Fax toll free: (847) 683-4544



W. R. MEADOWS, INC.
P.O. Box 338 • HAMPSHIRE, IL 60140-0338
Phone: 847/214-2100 • Fax: 847/683-4544
1-800-342-5976
www.wrmeadows.com
info@wrmeadows.com
www.twitter.com/wrmeadows

HAMPSHIRE, IL / CARTERSVILLE, GA / YORK, PA
FORT WORTH, TX / BENICIA, CA / POMONA, CA
GOODYEAR, AZ / MILTON, ON / ST. ALBERT, AB

Distributed by:



Manufactured By:

Gemite Products Inc.
1787 Drew Rd.
Mississauga, ON L5S 1J5
Canada
Tel: (888) 443-6483
Fax: (888) 443-6329
Email: techinfo@gemite.com
Web: www.gemite.com