

W. R. MEADOWS®

SEALTIGHT®

COLD-APPLIED JOINT SEALANTS

Protect Concrete Expansion Joints with
W. R. MEADOWS' Cold-Applied Joint Sealants

GUARDIAN OF THE PAVEMENT



wrmeadows.com





Why Choose W. R. MEADOWS Cold-Applied Joint Sealants

Concrete expands and contracts with temperature and moisture changes that can cause unsightly cracks and deterioration of the concrete if these inevitable climate fluctuations are not anticipated during the initial concrete placement. In order to prevent these stresses, predetermined locations that utilize expansion joints allowing for concrete movement are necessary to incorporate.

W. R. MEADOWS is an innovator in concrete expansion joint technology including several product patents, some dating back as far as 75+ years that are still widely used in the concrete construction market.

In order to properly install expansion joints, joint sealants are necessary to protect these man-made junctions. The expansion joint should be installed below the concrete surface to accept a joint sealant which will provide for maximum protection from water infiltration and weathering, in addition to keeping the joint free from incompressibles. **W. R. MEADOWS** offers a variety of premium-grade cold-applied joint sealants to get the job done.

POURTHANE® NS

Non-Sag Polyurethane Joint Sealant

POURTHANE NS is an elastomeric, low-modulus, one-component, moisture-curing, non-sag, polyurethane sealant. The product requires no mixing and typically requires no priming to bond to many materials, including concrete and masonry.

USES

POURTHANE NS has very good adhesion to most construction materials. It is particularly recommended for expansion joints between precast concrete panels and seams on wooden, metal, aluminum, and PVC joinery. POURTHANE NS is highly recommended for bonding concrete and baked clay roof tiles. The product is designed for the civil and industrial construction markets.



FEATURES & BENEFITS

- Ready to use and easy to gun and tool/No mixing and speeds application.
- Low VOC content/Approved in all 50 states for use.
- +/- 35% joint movement capability/Maintains flexibility in moving joints
- No primer required for most construction materials/Cost reduction.
- Maintains excellent weather resistance/Gives long lasting joint seal.
- Delivers a practical service temperature range/Can be used in all climates.
- Packaged in cartridges, sausages, and in bulk/Jobsite waste is reduced.
- Superior bonding/Long lasting baked clay roof tile application.



SEALANT • WATERPROOFING & RESTORATION INSTITUTE

Issued to: W.R. Meadows, Inc.

Product: Pourthane NS Non-SAG Joint Sealant

C719: Pass ☒ Ext: +35% Comp: -35%

Substrate: Mortar unprimed, glass unprimed, and Anodized Aluminum unprimed

Validation Date: 7/16/20 - 7/15/25

No. 2020-2025716

copyright © 2020

SEALANT VALIDATION

www.swrionline.org

POURTHANE SL

Self-Leveling Polyurethane Joint Sealant

POURTHANE SL is an elastomeric, one-component, self-leveling, non-bubbling, premium-grade polyurethane sealant specifically developed to be used as a multi-purpose horizontal joint sealant. The product is a moisture cure sealant with excellent adhesive properties and resistance to aging and weathering.

USES

POURTHANE SL is used to seal horizontal joints in concrete, such as sidewalks, balconies, pavement, terraces, warehouses, factories, civil structures, plazas, and runways. POURTHANE SL may also be used as a pitch pan sealant.

FEATURES & BENEFITS

- One-component, no mixing.
- Self-leveling.
- Non-bubbling formula can be applied to green or damp concrete.
- Movement capacity of +/-25%.
- Accelerated curing.
- Highly resistant to fuels, including jet fuel.
- Permanently elastic.
- High durability.
- Resists aging and weathering.
- Excellent adhesion.
- Convenient, easy-to-use packaging.
- Low VOC content.



DECK-O-SEAL

Two-Part, Elastomeric, Polysulfide-Based Joint Sealant

DECK-O-SEAL two-part, polysulfide-based joint sealant is a premium-grade, pourable, self-leveling sealant. It is a non-staining sealant that cures at an ambient temperature to a firm, flexible, tear-resistant rubber. DECK-O-SEAL is highly resilient and has excellent recovery characteristics after extended periods of compression or elongation. DECK-O-SEAL has outstanding resistance to most chemicals, to all weather conditions, aging, and shrinkage.

USES

DECK-O-SEAL is used for caulking and sealing joints subject to movement to provide a firm, flexible, weather-tight seal. It is ideal for sealing joints on swimming pool decks. It is applicable for both interior and exterior use.

FEATURES & BENEFITS

- Highly resilient with excellent recovery characteristics.
- Provides a uniform, watertight seal.
- Prevents uncontrolled cracking by allowing expansion and contraction during temperature changes.
- Stays flexible ... won't become brittle or crack due to ultraviolet exposure.
- Resists abrasion, weathering, and moisture ... elevated temperatures will not cause discoloration.
- Not affected by today's pool chemicals.
- Retains joint soundness in service once it's cured and can be stretched or compressed up to 25%.



DECK-O-SEAL 125

Two-Part Pourable Joint Sealant

DECK-O-SEAL 125 is 25% firmer than regular DECK-O-SEAL and is recommended for sealing joints and seams subjected to high pedestrian or vehicular traffic and is excellent for joints in swimming pool floors.

DECK-O-SEAL 150

Two-Part Pourable Joint Sealant

DECK-O-SEAL 150 is designed for general purpose sealing of joints and seams that are saw cut in forklift traffic areas and offers outstanding resistance to most chemicals, to all weather conditions, aging, and shrinkage.

DECK-O-SEAL GUN GRADE

Two-Part, Gun Grade Joint Sealant

DECK-O-SEAL GUN GRADE is a two-component, non-sag, non-flowing, polysulfide-based, flexible sealing compound for use in applications where short turn-around time is a requirement, such as pool bottom and sidewall repairs and areas subject to pedestrian and vehicular traffic.

DECK-O-SEAL ONE STEP

Elastomeric, Single-Component, Non-Sag, Polysulfide, Polymer-Based Sealing Compound

DECK-O-SEAL ONE STEP is a single-component, non-sag, elastomeric, polysulfide-based sealing compound used for caulking joints in structures that are subject to movement caused by temperature changes.



HS-1 SL

One-Part, Self-Leveling, SMP-Based Sealant

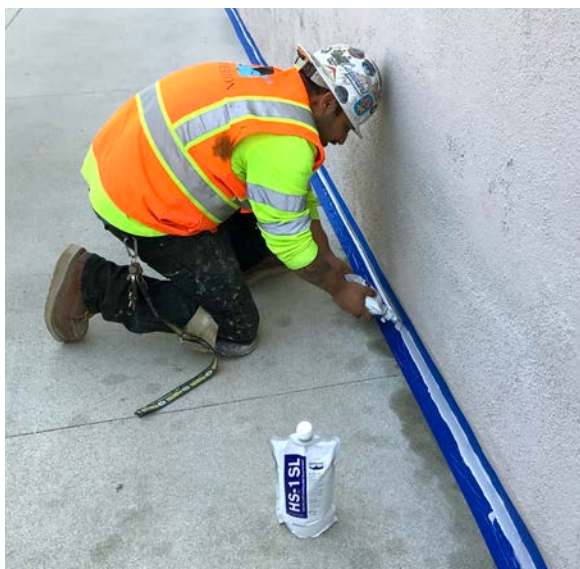
HS-1 SL is a one-part, self-leveling hybrid sealant, developed with silyl-modified polymer (SMP) technology. It cures under the influence of atmospheric moisture to form a medium modulus sealant with excellent adhesive properties and resistance to ageing and weathering.

USES

HS-1 SL can be used in movement and connection joints. Ideal applications include indoor and outdoor pool decks subject to pedestrian traffic.

FEATURES & BENEFITS

- One part – no mixing is needed on site.
- Self-leveling.
- Supplied in convenient pouches – no tooling or caulk gun needed.
- Pouch can be resealed.
- Allows movement capability of 25%.
- Cures bubble-free.
- Adheres to green concrete and damp surfaces.
- Adheres well to most construction materials.
- Is permanently elastic over a wide range of temperatures.
- Resists chlorinated water splashes.
- Non-gassing.
- VOC-compliant.



SOF-SEAL®

Cold-Applied, Low-Modulus Horizontal Joint Sealant

Cold-applied SOF-SEAL low modulus horizontal joint sealant is a premium-grade, pourable, two-component sealant composed of a special combination of polymeric compounds that provides outstanding performance in both Portland cement and asphalt concrete. Once properly mixed and applied, it cures within two hours to a soft, highly flexible, rubber-like material that is capable of maintaining a sealed joint or crack over a wide temperature range. SOF-SEAL does not track in the summer and will not become brittle at temperatures as low as -20° F (-29° C). It remains soft, flexible, and pliable in the joint, even after repeated freeze/thaw cycles. SOF-SEAL offers excellent elongation, high resiliency, tenacious bonding power, and excellent longevity. This self-leveling sealant requires no special application equipment and can easily be poured into cracks and joints.

USES

SOF-SEAL is a versatile pavement sealant suitable for either large- or small-scale sealing. It is excellent for crack repair and preventive maintenance sealing projects. It is ideal for use when a maintenance group doesn't have a melter, or where it is not practical to fire up and repeatedly move melter-applicator units (small-scale sealing projects). Typical applications include the sealing of expansion and contraction joints, longitudinal joints and random cracks in concrete pavements, reflective and random cracks in asphalt paving, and asphalt-to-concrete shoulder joints. It is also ideal for high-shear bridge joint applications. In addition, SOF-SEAL can be used as a pitch pan sealant.



FEATURES & BENEFITS

- Provides a cost-effective alternative to hot-applied sealants.
- Delivers reliable, consistent performance, even during cold weather or after repeated
- Remains pliable in the joint for years
- Accommodates joint movement effectively over a wide range of temperatures.
- Offers exceptional elongation and longevity, high resiliency, and tenacious bonding power.
- Rejects ingress of incompressibles.
- Does not become brittle or crack out in winter ... will not flow in warm weather.
- Maintains low stress development because of its low modulus properties.
- A proven alternative to silicone-based sealants.
- Can be used as a pitch pan sealant.

W. R. MEADOWS®

SEALTIGHT®

GUARDIAN OF THE PAVEMENT



#wrmeadows

W. R. MEADOWS, INC.

P.O. Box 338 • Hampshire, IL 60140-0338
Phone: 847/214-2100 • Fax: 847/683-4544
1-800-342-5976

www.wrmeadows.com • info@wrmeadows.com

HAMPSHIRE, IL / CARTERSVILLE, GA / YORK, PA
FORT WORTH, TX / BENICIA, CA / POMONA, CA
GOODYEAR, AZ / MILTON, ON / SHERWOOD PARK, AB