



CONSTRUCTION LIQUIDS

For any application you may have, we have you covered.



Whatever your needs...
we have the solution.



CONSTRUCTION LIQUIDS

**For over 95 years,
W. R. MEADOWS has been
leading the way in product
innovation and technology.
Our line of construction
liquids has been recognized
as a leader and trendsetter
in the industry.**

W. R. MEADOWS offers VOC-compliant solvent- and water-based products to meet every need of the construction industry. Our products are backed by over 95 years of experience.

Our water-based products were created in the 1970s in order to meet future market needs. This GREEN LINE of environmentally friendly products has been a popular part of our line since its inception. These products assist designers in earning LEED credits when used in green projects. W. R. MEADOWS is a member of the United States and Canada Green Building Council (CaGBC).

Research and Development

Innovative ideas from our research and development lab keep us on the leading edge of construction products technology in our key markets of opportunity. From the very beginning, W. R. MEADOWS, INC. has been determined to play a leadership role in the concrete construction industry. The company has achieved that goal and maintains its leadership position through the development of unique products that are proprietary by design. Our own in-house research and development laboratory continues to play a key role in keeping us and our product lines on the leading edge of technology. We are committed to being a leader in research and development. Innovation is a key part of our success.

Curing Compounds vs. Curing and Sealing Compounds vs. Sealing Compounds

Curing compounds (cures)

are liquid membrane-forming compounds that, when applied to fresh concrete, reduce moisture loss in the early hardening period. A curing compound helps retain moisture in the concrete, resulting in improved hydration of the concrete. This improved hydration produces a stronger, denser concrete substrate when compared to improperly or uncured concrete. The curing compound is considered a temporary coating, which will eventually break down and dissipate from exposure to UV light, traffic, etc.

A **curing and sealing compound (cures and seals)** cures as outlined above, but also forms a film that offers continued protection and improved aesthetic qualities, such as shine and a glossy, wet look, to the concrete. Curing and sealing compounds are designed to be used on fresh concrete to cure, and then will also remain on the concrete to offer the additional benefits of a sealer, such as improved appearance and improved resistance to chemicals, water, de-icing salts, etc.

A **sealing compound (sealers)** are designed to be applied after the concrete has cured, providing the sealing properties that are outlined above.

W. R. MEADOWS offers all three types of compounds, to suit your every concrete surface need.

Decorative Concrete

W. R. MEADOWS continues to support the booming decorative concrete market with several products to make your project a work of art. Give your decorative concrete project a look that lasts with the following products:



- DECRA-SEAL** VOC-compliant decorative concrete cure and seal
- DECRA-SEAL NATURAL** Water-Based Enhancer and Water Repellent Sealer
- DECRA-SEAL W/B** non-yellowing sealer for decorative concrete
- EXPO-GLOSS** "wet look" exposed aggregate sealer
- INTRAGUARD™** Water-Based, Clear, Penetrating Sealing Compound for Salt Protection
- BELLATRIX** premium concrete enhancer
- TOP-STOP** spray-applied, water-based surface retarder
- EVAPRE & EVAPRE-RTU** evaporation retardant
- DECK-O-FOAM** expansion joint filler
- SURE-STEP** slip-resistant additive

Curing and Sealing Products:

Curing Compounds

- 1100
- 1200-WHITE
- 1300-CLEAR
- 1600-WHITE
- 2200-WHITE

Curing and Sealing Compounds

- CS-309™-25
- CS-309-30
- TIAH®
- TIAH 100
- CS-309-OTC
- CS-309-25 OTC
- CS-309-30 OTC
- DECK-O-GRIP®
- DECRA-SEAL™
- DECRA-SEAL 100
- DECRA-SEAL OTC
- VOCOMP®-20
- VOCOMP-25
- VOCOMP-30
- LIN-SEAL®
- LIN-SEAL EMULSION
- LIN-SEAL WHITE
- PENCURE OTC

Surface Retarder

- TOP-STOP™

Sealing Compounds

- DECRA-SEAL NATURAL
- DECRA-SEAL W/B
- DECK-O-GRIP W/B
- DECK-O-SHIELD™
- DECK-O-SHIELD PLUS
- INTRAGUARD
- TIAH® OTC

- SEAL CURE-25
- SEAL CURE-30
- PENTREAT 244-40
- PENTREAT 244-40 OTC
- PENTREAT 244-100
- PENTREAT 244-20 W/B
- PENTREAT 244-40 W/B

Concrete Curing Agent, Hardener, and Dustproofers

- MED-CURE™
- SIL-CRETE™

Concrete Densifier and Hardener

- LIQUI-HARD®
- LIQUI-HARD ULTRA

Concrete Set Accelerators

- HYDRASET®
- HYDRASET-FREE®

Form Releases

- DUOGARD®
- DUOGARD II
- DUOGARD CITRUS
- DUOGARD N.E.

Evaporation Retardants

- EVAPRE™
- EVAPRE-RTU

Concrete Cleaning

- ULTRITE COATING REMOVER
- ULTRITE CLEANER

Premium Concrete Enhancer

- BELLATRIX

In addition to the products listed, **W. R. MEADOWS** provides products for specific areas of the country, including California and the Northeast. These products are formulated to meet state and local VOC regulations. To find out which products are available in your area, call your local branch office at **800.342.5976**. In addition, certain location-specific products are listed on our website at www.wrmeadows.com.

Quick Reference Selector for C

CURING COMPOUNDS

Product Name		1100 Series Water-Based, Resin-Based Concrete Curing Compound MasterFormat: 03 39 23 Membrane Concrete Curing	1300-CLEAR Series Water-Based, Wax-Based Concrete Curing Compound MasterFormat: 03 39 23 Membrane Concrete Curing	1200-WHITE Series Water-Based, Resin-Based Pigmented Concrete Curing Compound MasterFormat: 03 39 23 Membrane Concrete Curing	1600-WHITE Series Water-Based, Wax-Based Pigmented Concrete Curing Compound MasterFormat: 03 39 23 Membrane Concrete Curing	2200-WHITE Series Poly-Alphamethylstyrene Concrete Curing Compound MasterFormat: 03 39 23 Membrane Concrete Curing
Features/Benefits		<ul style="list-style-type: none"> Provides a premium-grade film which optimizes water retention. Ready to use, water-based. Produces hard, dense concrete ... minimizes hair-checking, thermal cracking, dusting and other defects. Different formulations are available by region. Products are formulated to meet local VOC regulations and/or DOT spec requirements. 	<ul style="list-style-type: none"> Provides a premium-grade film which optimizes water retention. Ready to use, water-based. Produces hard, dense concrete ... minimizes hair-checking, thermal cracking, dusting and other defects. Different formulations are available by region. Products are formulated to meet local VOC regulations and/or DOT spec requirements. 	<ul style="list-style-type: none"> Provides a premium-grade film which optimizes water retention. Reflects the sun's rays to keep the concrete surface cooler and prevent excessive heat buildup, which can cause thermal cracking. Ready to use, water-based. Produces hard, dense concrete ... minimizes hair-checking, shrinkage, thermal cracking, dusting and other defects. Different formulations are available by region. Products are formulated to meet local VOC regulations and/or DOT spec requirements. 	<ul style="list-style-type: none"> Provides a premium-grade film which optimizes water retention. Reflects the sun's rays to keep the concrete surface cooler and prevent excessive heat buildup, which can cause thermal cracking. Ready to use, water-based compound. Produces hard, dense concrete ... minimizes hair-checking, shrinkage, thermal cracking, dusting and other defects. Different formulations are available by region. Products are formulated to meet local VOC regulations and/or DOT spec requirements. 	<ul style="list-style-type: none"> Ready for use and applied easily. Excellent moisture retention. Does not react with the ingredients in Portland Cement concrete. Poly-Alphamethylstyrene-resin-based. Furnishes a white-pigmented film, allowing for cooler concrete during the hydration process. Improved abrasion resistance of concrete surface. VOC compliant . . . meets U.S. EPA Architectural Coatings Rule requirements.
Specifications		<ul style="list-style-type: none"> ASTM C309, Type 1, Classes A & B (Type 1-D also available) AASHTO M 148, Type 1, Classes A & B (Type 1-D also available) 	<ul style="list-style-type: none"> ASTM C 309, Type 1, Class A (Type 1-D also available) AASHTO M 148, Type I, Class A (Type 1-D also available) 	<ul style="list-style-type: none"> ASTM C 309, Type 2, Class A & B AASHTO M 148, Type 2, Class A & B FAA Spec. Item P-610-2.11 (e) 	<ul style="list-style-type: none"> ASTM C 309, Type 2, Class A AASHTO M 148, Type 2, Class A FAA Spec. Item P-610-2.11 (e) 	<ul style="list-style-type: none"> ASTM C 309, Type 2, Class A & B ASTM C 1315, Type II, Class B AASHTO M 148, Type 2, Class A & B
Packaging		<ul style="list-style-type: none"> 5 Gallon (18.93 Liter) Pails 55 Gallon (208.20 Liter) Drums 275 Gallon (1041 L) Totes 	<ul style="list-style-type: none"> 5 Gallon (18.93 Liter) Pails 55 Gallon (208.20 Liter) Drums 275 Gallon (1041 L) Totes 	<ul style="list-style-type: none"> 5 Gallon (18.93 Liter) Pails 55 Gallon (208.20 Liter) Drums 275 Gallon (1041 L) Totes 	<ul style="list-style-type: none"> 5 Gallon (18.93 L) Pails 55 Gallon (208.20 L) Drums 275 Gallon (1041 L) Totes 	<ul style="list-style-type: none"> 5 Gallon (18.93 Liter) Pails 55 Gallon (208.20 Liter) Drums
Coverage		<ul style="list-style-type: none"> Approximately 200 sq. ft./gal. (4.9 sq. m/L) 	<ul style="list-style-type: none"> Approximately 200 sq. ft./gal. (4.9 sq. m/L) 	<ul style="list-style-type: none"> Approximately 200 sq. ft./gal. (4.9 sq. m/L) 	<ul style="list-style-type: none"> Approximately 200 sq. ft./gal. (4.91 sq. m/L) 	<ul style="list-style-type: none"> Approximately 200 sq. ft./gal. (sq. m/L)
Usage		Interior and exterior applications where paint, resilient tile, or resilient flooring may be applied later once the curing compound has dissipated or has been properly removed.	Used on both interior and exterior, horizontal or vertical concrete applications, where subsequent surface treatments will not be applied.	Ideal for application on exterior, horizontal surfaces, such as highways, airports, street and curb paving - for optimum curing when protection from the sun's heat is desired.	Ideal for application on exterior, horizontal surfaces, such as highways, airports, and street and curb paving - for optimum curing when protection from the sun's heat is desired.	Is white-pigmented to reflect the sun's rays. This maintains cooler concrete, reducing the expansive and contractive stresses that cause cracking during the hydration process. Provides a tough, smooth, uniform film with excellent adhesion to the fresh concrete surface, producing high quality, durable concrete.
Applications	Interior	•	•		•	•
	Exterior	•	•	•	•	•
	Horizontal	•	•	•	•	•
	Vertical	•	•			
	Fresh Concrete	•	•	•	•	•
	Existing Concrete					

Construction Liquid Products

CURING AID, DENSIFIER AND HARDENER		CURING AND SEALING COMPOUNDS		
<p>MED-CURE Concrete Curing Aid & Hardener MasterFormat: 03 35 00 Concrete Finishing</p>	<p>SIL-CRETE Lithium-Silicate Curing Agent and Densifier MasterFormat: 03 30 00 Concrete Finishing</p>	<p>CS-309-25 Non-Yellowing Acrylic Curing and Sealing Compound MasterFormat: 03 39 23 Membrane Concrete Curing</p>	<p>CS-309-30 Acrylic, Non-Yellowing Curing and Sealing Compound MasterFormat: 03 39 23 Membrane Concrete Curing</p>	<p>SEAL CURE 309-25 Concrete Curing and Sealing Compound MasterFormat: 03 05 00 Common Work Results in Concrete</p>
<ul style="list-style-type: none"> • Penetrates to aid curing, as well as to harden concrete in one easy application. • Provides a low maintenance finished surface. • Tint aids in identifying coverage. • Ideal for new or old, interior or exterior, horizontal or vertical concrete surfaces. • Dries fast and may be re-coated if desired. • Application tools may be cleaned with water. • VOC content is 0 g/L. 	<ul style="list-style-type: none"> • Densifies and dustproofs concrete surfaces. • Does not inhibit adhesion of subsequent coatings and other topical treatments. • Will not discolor, yellow, peel, or flake. • VOC compliant. • Dustproofs and improves abrasion resistance of treated surfaces. • Does not form a film. • Interior or exterior application. • Meets the moisture loss requirements of ASTM C309 on hard-troweled concrete. 	<ul style="list-style-type: none"> • Provides a totally clear membrane for new or existing concrete that will not yellow. • Permeable film allows moisture in cured concrete to evaporate. • Provides a tough, durable, uniform, long-lasting film finish on exterior concrete surfaces. • Cures and seals freshly placed concrete simultaneously in one application. • Produces a premium-grade seal, yielding optimum moisture retention. 	<ul style="list-style-type: none"> • Provides a totally clear membrane for new and existing concrete that will not yellow. • Provides a tough, non-yellowing, durable, uniform, long-lasting film finish on exterior concrete surfaces. • Cures, hardens, dustproofs and seals freshly placed concrete simultaneously in one application. • Produces a premium-grade seal yielding superior moisture retention. 	<ul style="list-style-type: none"> • Provides an economical, durable, tough, uniform, nearly impermeable, long-lasting film finish on exterior concrete surfaces. • Cures, hardens, dustproofs and seals freshly placed concrete simultaneously in one application. • Produces a nearly impermeable seal yielding optimum moisture retention. • Minimizes hair-checking, cracking, shrinkage, dusting, spalling and other defects common to improperly or uncured concrete.
<ul style="list-style-type: none"> • Meets the moisture retention requirement of ASTM C309 Type 1 or Type 1D, Class A on densely-troweled concrete. • Complies with all current federal, state, and local maximum allowable VOC requirements, including National AIM, LADCO, OTC Phase I and II, CARB, and SCAQMD. • Tested per CDPH/EHLB Standard Method V1.2-2017 Emission Testing Method (Report available upon request) • Treated surface is USDA accepted. 	<ul style="list-style-type: none"> • ASTM C 309 on hard-troweled concrete • National EPA VOC Emission Standard for Architectural Coatings, CARB, LADCO, OTC Phase I and II, and SCAQMD. • Dried film is USDA accepted 	<ul style="list-style-type: none"> • ASTM C 309, Type 1, Classes A & B • ASTM C 1315, Type I, Class A • AASHTO M 148, Type 1 Classes A & B 	<ul style="list-style-type: none"> • ASTM C 309, Type 1, Classes A & B • ASTM C 1315, Type 1, Class A • AASHTO M 148, Type 1, Classes A & B 	<ul style="list-style-type: none"> • ASTM C 309, Type 1, Classes A & B • ASTM C 1315, Type I, Class B • AASHTO M 148, Type 1, Classes A & B
<ul style="list-style-type: none"> • 5 Gallon (18.93 Liter) Pails • 55 Gallon (208.20 Liter) Drums • 275 Gallon (1040.99 Liter) Totes 	<ul style="list-style-type: none"> • 5 Gallon (18.93 Liter) Pails • 55 Gallon (208.20 Liter) Drums 	<ul style="list-style-type: none"> • 1 Gallon (3.79 Liter) Cans (4 per case) • 5 Gallon (18.93 Liter) Pails • 55 Gallon (208.20 Liter) Drums 	<ul style="list-style-type: none"> • 5 Gallon (18.93 Liter) Pails • 55 Gallon (208.20 Liter) Drums 	<ul style="list-style-type: none"> • 5 Gallon (18.93 Liter) Pails • 55 Gallon (208.20 Liter) Drums
<ul style="list-style-type: none"> • Broomed surface: 400 sq.ft./gal. (9.82 sq.m/L) • Troweled surface: 600 sq.ft./gal. (14.73 sq.m/L) 	<p>Fresh hard-troweled concrete: 400 – 700 ft.²/gal. (9.8 – 17.2 m²/L) Fresh, uncured, burnished concrete: 500 – 800 ft.²/gal. (12.3 – 19.6 m²/L) Existing, broomed concrete: 400 ft.²/gal. (9.8 m²/L)</p>	<ul style="list-style-type: none"> • 300-600 sq. ft./gal. (7.37-14.73 sq. m./L) 	<ul style="list-style-type: none"> • 300-600 sq. ft./gal.(7.37-14.73 sq.m./L). 	<ul style="list-style-type: none"> • 300-600 sq. ft./gal. (7.37-14.73 sq. m/L)
<p>Ideal as a curing aid, as well as for hardening and dustproofing exposed concrete floor slabs, sidewalks, driveways, beams, columns, etc. Can be used to provide a hard, dust-free surface on concrete floors to be painted or covered by resilient, carpeted, wood or synthetic flooring.</p>	<p>SIL-CRETE concrete curing agent and densifier is a waterborne, low solids, lithium-silicate-based, ready-to-use formulation which cures and densifies freshly troweled concrete and also can be used to densify and seal existing concrete. When applied to fresh concrete, the product helps to reduce water evaporation and improves the surface integrity of the concrete.</p>	<p>Ideal for application on commercial and industrial concrete surfaces, sidewalks, patios, multi-level parking decks, driveways and parking areas. Provides a durable, long-lasting finish that offers improved resistance to chemicals, oil, grease, de-icing salts and abrasion. Provides an attractive, low sheen finish that enhances the natural appearance of the concrete.</p>	<p>Ideal for application on commercial and industrial concrete surfaces, sidewalks, patios, multi-level parking decks, driveways and parking areas. Provides a durable, long-lasting finish that offers improved resistance to chemicals, oil, grease, de-icing salts and abrasion. Provides an attractive, low sheen finish that enhances the natural appearance of the concrete.</p>	<p>May be used on freshly placed and finished exterior concrete surfaces, aged concrete surfaces and concrete walls. Ideal for use on industrial and commercial concrete surfaces, sidewalks, parking decks, driveways, etc., or any place a medium-sheen finish is desired. Can be applied to colored concrete.</p>
<ul style="list-style-type: none"> • • • • • • 	<ul style="list-style-type: none"> • • • • • • 	<ul style="list-style-type: none"> • • • • • • 	<ul style="list-style-type: none"> • • • • • • 	<ul style="list-style-type: none"> • • • • • •

Quick Reference Selector for C

CURING AND SEALING COMPOUNDS

Product Name	CS-309-OTC Non-Yellowing, Acrylic Curing and Sealing Compound For Decorative Concrete MasterFormat: 03 39 23 Membrane Concrete Curing	CS-309-25 OTC Non-Yellowing, Acrylic Curing and Sealing Compound MasterFormat: 03 39 23 Membrane Concrete Curing	CS-309-30 OTC Acrylic, Non-Yellowing Curing and Sealing Compound MasterFormat: 03 39 23 Membrane Concrete Curing	DECK-O-GRIP Non-Yellowing, Acrylic, Slip-Resistant Concrete Deck Treatment MasterFormat: 03 39 23 Membrane Concrete Curing	DECRA-SEAL Non-Yellowing Acrylic Curing and Sealing Compound for Decorative Concrete MasterFormat: 03 39 23 Membrane Concrete Curing
Features/ Benefits	<ul style="list-style-type: none"> Specifically formulated to enhance the appearance of colored and architectural concrete. Permeable film allows moisture in cured concrete to evaporate. Provides a clear, tough, easy-to-clean film which improves abrasion and stain resistance. Ultraviolet stable; non-yellowing under extreme exposure. Offers excellent foot or vehicular traffic wearing qualities. 	<ul style="list-style-type: none"> Provides a totally clear membrane for new or existing concrete. Permeable film allows moisture in cured concrete to evaporate. Provides a tough, durable, uniform, long-lasting film on exterior concrete surfaces. Ultraviolet stable; non-yellowing under extreme exposure. Cures and seals freshly placed concrete simultaneously in one application. Produces a premium-grade seal, yielding optimum moisture retention. 	<ul style="list-style-type: none"> Provides a totally clear membrane for new and existing concrete that will not yellow. Provides a tough, non-yellowing, durable, uniform, moisture-impermeable, long-lasting film finish on exterior concrete surfaces. Cures, hardens, dustproofs and seals freshly placed concrete simultaneously in one application. Produces a premium-grade seal yielding superior moisture retention. Minimizes hair-checking, cracking, dusting, spalling, and other defects 	<ul style="list-style-type: none"> Provides a totally clear membrane for new or existing concrete that will not yellow. Permeable film allows moisture in cured concrete to evaporate. Seals all concrete surfaces, providing a glossy appearance and easier clean up. Dustproofs concrete with a tough, durable film. Helps minimize spalling of exterior concrete. Provides good blush resistance in damp areas. 	<ul style="list-style-type: none"> Provides a totally clear membrane that will not yellow, for new or existing concrete. Permeable film allows moisture in cured concrete to evaporate. Seals all concrete surfaces, providing a glossy appearance and easier clean up. Dustproofs concrete with a tough, durable film. Helps minimize spalling of exterior concrete. Provides good blush resistance in damp areas. Applies easily . . . dries to the touch in 30 - 60 minutes.
Specifications	<ul style="list-style-type: none"> ASTM C 309, Type 1, Classes A & B AASHTO M 148, Type 1, Classes A & B 	<ul style="list-style-type: none"> ASTM C 309, Type 1, Classes A & B ASTM C 1315, Type I, Class A AASHTO M 148, Type 1 Classes A & B 	<ul style="list-style-type: none"> ASTM C 309, Type 1, Classes A & B ASTM C 1315, Type I, Class A AASHTO M 148, Type 1, Classes A & B 	<ul style="list-style-type: none"> ASTM C 309, Type I, Classes A & B ASTM C 1315, Type I, Class A AASHTO M 148, Type I, Classes A & B 	<ul style="list-style-type: none"> ASTM C 309, Type 1, Class A & B ASTM C 1315, Type 1, Class A AASHTO M 148, Type 1, Classes A & B
Packaging	<ul style="list-style-type: none"> 1 Gallon (3.79 L) Cans 5 Gallon (18.93 L) Pails 55 Gallon (208.20 L) Drums 	<ul style="list-style-type: none"> 1 Gallon (3.79 Liter) Cans (6 per case) 5 Gallon (18.93 Liter) Pails 55 Gallon (208.20 Liter) Drums 	<ul style="list-style-type: none"> 5 Gallon (18.93 Liter) Pails 55 Gallon (208.20 Liter) Drums 	<ul style="list-style-type: none"> 1 Gallon (3.79 Liter) Cans 5 Gallon (18.93 Liter) Pails 	<ul style="list-style-type: none"> 1 Gallon (3.79 Liter) Cans (6 per carton) 5 Gallon (18.93 Liter) Pails
Coverage	<ul style="list-style-type: none"> 300-600 sq. ft./gal. (7.37-14.73 sq. m), depending on surface finish. *Coverage may vary due to porosity and condition of the concrete. 	<ul style="list-style-type: none"> 300-600 sq. ft./gal. (7.37-14.73 sq. m/L). 	<ul style="list-style-type: none"> 300-600 sq. ft./gal. (7.37-14.73 sq. m/L). 	<ul style="list-style-type: none"> 300-600 sq. ft./gal. (7.37-14.73 sq. m/L), depending on surface finish. *Coverage may vary due to porosity and condition of the concrete. 	<ul style="list-style-type: none"> 300-600 sq. ft./gal. (7.37-14.73 sq. m/L)
Usage	Used on driveways, patios, industrial floors, loading docks, swimming pool areas and exposed aggregate, as well as any exterior decorative surface where an enhanced appearance, protection and sealing of concrete is desired (dries to a low-medium sheen). (Higher gloss films can be achieved with additional applications.)	CS-309-25 OTC is ideal for application on commercial and industrial concrete surfaces, sidewalks, patios, multi-level parking decks, driveways and parking areas . . . wherever you want to simultaneously cure and seal exterior concrete surfaces. The use of CS-309-25 OTC on any exterior concrete surface provides a durable, long-lasting finish that offers improved resistance to chemicals, oil, grease, de-icing salts and abrasion.	CS-309-30 OTC is ideal for application on commercial and industrial concrete surfaces, sidewalks, patios, multi-level parking decks, driveways and parking areas - wherever you want to simultaneously cure and seal exterior concrete surfaces. The use of CS-309-30 OTC on any exterior concrete surface provides a durable, long-lasting finish that has improved resistance to chemicals, oil, grease, de-icing salts, and abrasion.	DECK-O-GRIP is designed for various exterior concrete applications, including swimming pool areas and exposed aggregate.	Designed for various applications, including exterior concrete surfaces, driveways, patios, swimming pool areas, exposed aggregate, as well as any exterior surface where protection and sealing of concrete is desired. Provides a durable, long-lasting finish that offers improved resistance to chemicals, oil, grease, de-icing salts and abrasions.
Applications	Interior				
	Exterior	•	•	•	•
	Horizontal	•	•	•	•
	Vertical	•	•	•	•
	Fresh Concrete	•	•	•	•
Existing Concrete	•	•	•	•	

Construction Liquid Products

CURING AND SEALING COMPOUNDS

<p>DECRA-SEAL 100 Non-Yellowing Acrylic Curing and Sealing Compound for Decorative Concrete MasterFormat: 03 39 23 Membrane Concrete Curing</p>	<p>DECRA-SEAL OTC Non-Yellowing, Acrylic Curing and Sealing Compound for Decorative Concrete MasterFormat: 03 39 23 Membrane Concrete Curing</p>	<p>TIAH Non-Yellowing Acrylic Curing and Sealing Compound MasterFormat: 03 39 23 Membrane Concrete Curing</p>	<p>VOCOMP-20 Water-Based Acrylic Curing and Sealing Compound MasterFormat: 03 05 00 Common Work Results in Concrete</p>	<p>VOCOMP-25 Water-Based Acrylic Concrete Cure & Seal MasterFormat: 03 05 00 Common Work Results in Concrete</p>
<ul style="list-style-type: none"> • Seals concrete surfaces, providing a glossy, long-lasting appearance and easier cleanup. • Provides a totally clear membrane that will not yellow for new or existing concrete. • Provides good blush resistance in damp areas. • Applies easily . . . dries to the touch in 30 – 60 minutes. • Breathable film – allows moisture in cured concrete to evaporate. • Provides a clear, tough film that improves abrasion- and stain-resistance. • Seals and enhances the beauty of many concrete surfaces. • Can be recoated after thorough surface cleaning to restore original beauty. • VOC compliant. • Formulated to resist bubbling. • Formulated to resist spider webbing. 	<ul style="list-style-type: none"> • Seals all concrete surfaces, providing a glossy, long-lasting appearance and easier cleanup. • Provides a totally clear membrane that will not yellow, for new or existing concrete. • Dustproofs concrete with a tough, durable film. • Helps minimize spalling of exterior concrete. • Provides good blush resistance in damp areas. • Applies easily . . . dries to the touch in 30 - 60 minutes. 	<ul style="list-style-type: none"> • Applies easily ... dries to the touch in 30-60 minutes. • Provides a clear, tough, easy-to-clean film which improves abrasion and stain resistance. • Offers improved resistance to rain and sun, freezing temperatures, most acids and industrial chemicals, oil, grease, de-icing salts, cleaning agents (except aromatic solvents), caustics, airborne soot, dust and other pollutants. • Excellent foot or vehicular traffic wearing qualities. 	<ul style="list-style-type: none"> • Ready to use, non-yellowing, water-based, cures and/or seals in one quick and easy application. • Minimizes hair-checking, premature cracking, dusting and spalling. • Dries quickly on new concrete to a durable, clear sheen finish that protects and enhances the natural appearance of concrete. • Ideal for application on interior, exterior, horizontal and vertical concrete surfaces. • Resists adhesion of mortar droppings to protect concrete floors during construction ... permits easier cleanup. 	<ul style="list-style-type: none"> • Ready to use, non-yellowing, water-based, cures and seals concrete in one quick and easy application. • Dries quickly on new concrete to provide a clear, tough, easy-to-clean sheen finish. • Applicable for use on new, old, interior, exterior, horizontal and vertical concrete surfaces. • Offers improved resistance to most chemicals, petroleum, abrasives and mortar droppings. • Application tools can be cleaned with soap and water.
<ul style="list-style-type: none"> • ASTM C 309, Type 1, Class A & B • ASTM C 1315, Type 1, Class A • AASHTO M 148, Type 1, Classes A & B 	<ul style="list-style-type: none"> • ASTM C 309, Type 1, Class A & B • ASTM C 1315, Type 1, Class A • AASHTO M 148, Type 1, Class A & B 	<ul style="list-style-type: none"> • ASTM C 309, Type 1, Classes A & B • ASTM C 1315, Type I, Class A • AASHTO M 148, Type 1, Classes A & B 	<ul style="list-style-type: none"> • ASTM C 309, Type 1, Classes A & B • AASHTO M 148, Type 1, Classes A & B 	<ul style="list-style-type: none"> • ASTM C 309, Type 1, Classes A & B • ASTM C 1315, Type I, Class A • AASHTO M 148, Type 1, Classes A & B
<ul style="list-style-type: none"> • 1 Gallon (3.79 Liter) Cans (4 per carton) • 5 Gallon (18.93 Liter) Pails 	<ul style="list-style-type: none"> • 1 Gallon (3.79 Liter) Cans (4 per carton) • 5 Gallon (18.93 Liter) Pails • 55 Gallon (208.20 Liter) Drums 	<ul style="list-style-type: none"> • 1 Gallon (3.79 Liter) Cans • 5 Gallon (18.93 Liter) Pails • 55 Gallon (208.20 Liter) Drums 	<ul style="list-style-type: none"> • 1 Gallon (3.79 Liter) Units (4 per case) • 5 Gallon (18.93 Liter) Pails • 55 Gallon (208.20 Liter) Drums 	<ul style="list-style-type: none"> • 1 Gallon (3.79 Liter) Units (4 per case) • 5 Gallon (18.93 Liter) Pails • 55 Gallon (208.20 Liter) Drums
<ul style="list-style-type: none"> • 300-600 sq. ft./gal. (7.37-14.73 sq. m/L) 	<ul style="list-style-type: none"> • 300-600 sq. ft./gal. (7.37-14.73 sq. m/L) <p>Coverage may vary due to porosity and condition of the concrete.</p>	<ul style="list-style-type: none"> • 300-600 sq. ft./gal. (7.37-14.73 sq. m/L) 	<ul style="list-style-type: none"> • Approximately 300 sq. ft./gal. (7.36 sq. m/L) 	<ul style="list-style-type: none"> • Broomed surface: Approximately 300 sq. ft./gal. (7.35 sq. m/L) • Troweled surface: Approximately 500 sq. ft./gal. (12.26 sq. m/L)
<p>DECRA-SEAL 100 is a premium-grade, non-yellowing, acrylic curing and sealing compound for plain gray and decorative concrete. The product is clear, transparent, and easy to apply. DECRA-SEAL 100 forms a premium-grade acrylic film for optimum moisture retention in freshly placed concrete. The high solids, non-yellowing, acrylic film seals and truly enhances the beauty of both plain gray and decorative concrete. This product has been formulated to cure, seal, and protect concrete by producing a hard, yet flexible, clear film.</p>	<p>DECRA-SEAL OTC is designed for various applications, including exterior concrete surfaces, driveways, patios, swimming pool areas, and exposed aggregate, as well as any exterior surface where protection and sealing of concrete is desired. DECRA-SEAL OTC provides a durable, long-lasting, high-sheen finish that offers improved resistance to chemicals, oil, grease, deicing salts, and abrasions.</p>	<p>Can be used on driveways, patios, industrial floors, loading docks, swimming pool areas and exposed aggregate, as well as any exterior surface where protection and sealing of concrete is desired (dries to a low medium sheen). Offers improved resistance to rain, sun, freezing temperatures, stains, most acids and industrial chemicals, oil, grease, deicing salts, and more.</p>	<p>Cures and/or seals new interior and exterior and vertical and horizontal concrete surfaces. Ideal for application on commercial and industrial floors, sidewalks, basement and garage floors, multi-level parking decks, patios, driveways and parking areas. Dries very quickly to protect and enhance the natural appearance of concrete.</p>	<p>May be used wherever a medium-to-high sheen is desired to bring out the natural beauty of concrete without discoloring, checking or peeling. Simultaneously cures, seals and dustproofs new, old, interior, exterior, horizontal and vertical concrete surfaces. Ideal for curing, sealing and dustproofing driveways, sidewalks, patios, swimming pool areas and commercial and industrial floors.</p>
<ul style="list-style-type: none"> • • • • • 	<ul style="list-style-type: none"> • • • • • 	<ul style="list-style-type: none"> • • • • • 	<ul style="list-style-type: none"> • • • • • 	<ul style="list-style-type: none"> • • • • •

Quick Reference Selector for C

CURING AND SEALING COMPOUNDS

Product Name	VOCOMP-30 Water-Based Acrylic Concrete Curing and Sealing Compound MasterFormat: 03 05 00 Common Work Results in Concrete	LIN-SEAL Penetrating and Anti-Spalling Compound MasterFormat: 03 05 00 Common Work Results in Concrete	LIN-SEAL EMULSION Curing and Sealing Compound MasterFormat: 03 05 00 Common Work Results in Concrete	LIN-SEAL WHITE Curing and Anti-Spalling Compound MasterFormat: 03 05 00 Common Work Results in Concrete	PENCURE OTC Proprietary, Dual-Action, Acrylic Curing and Sealing Compound MasterFormat: 03 39 23 Common Work Results in Concrete
Features/Benefits	<ul style="list-style-type: none"> • Ready to use, non-yellowing, water-based, seals and protects concrete in one quick and easy application • Dries quickly on new concrete to provide a clear, tough, easy-to-clean sheen finish. • For use on new, old, interior, exterior, horizontal and vertical concrete surfaces. • Offers improved resistance to most chemicals, petroleum, abrasives and mortar droppings. • Application tools can be cleaned with soap and water. • VOC compliant 	<ul style="list-style-type: none"> • Protects concrete surfaces against over-exposure to de-icing salts, water and other destructive materials. • Increases the durability of the concrete. • Reduces spalling and scaling of concrete surfaces. • Treated surfaces are ready for use four hours after application. • Ready to use ... no mixing required. • Seals, protects and extends the life of wood. • Easy to apply ... cleans up quickly with mineral spirits. 	<ul style="list-style-type: none"> • Increases durability to extend the useful life of concrete. • Water-based compound. • Ready to use. • Aids in moisture retention. • Quick, easy application. • Prevents scaling and spalling. • Adherence of subsequent paint applications is not affected. • VOC compliant ... actual VOC content is <50 g/L. 	<ul style="list-style-type: none"> • Produces a nearly impermeable film which optimizes water retention. • Reflects the sun's rays to keep the concrete surface cooler and prevent excessive heat buildup, which can cause thermal cracking. • Ready to use, water-based. • Produces hard, dense concrete ... minimizes hair-checking, shrinkage, thermal cracking, dusting and other defects. • Prevents scaling and spalling. 	<ul style="list-style-type: none"> • Unique dual-action formulation – cures freshly placed concrete and reduces the intrusion of water and salt penetration. • Single-step application. • Breathable film allows moisture in cured concrete to evaporate. • Provides a clear membrane that will not yellow. • Provides low-gloss appearance. • Minimizes hair checking, cracking, dusting, spalling, and other defects common to improperly cured or uncured concrete. • VOC compliant.
Specifications	<ul style="list-style-type: none"> • ASTM C 309, Type I and II, Class A & B • ASTM C 1315, Type I, Class A • AASHTO M 148, Type I and II, Class A & B 	<ul style="list-style-type: none"> • AASHTO M 233 • Boiled Linseed Oil ... ASTM D 260 	<ul style="list-style-type: none"> • ASTM C 309 Type 1, Classes A & B* • AASHTO M 148 Type 1, Classes A & B* *With exemption for drying time. 	<ul style="list-style-type: none"> • ASTM C 309, Type 2, Classes A & B* • AASHTO M 148, Type 2, Classes A & B* *With exemption for drying time. 	<ul style="list-style-type: none"> • ASTM C309, Type 1, Class A & B • AASHTO M 148, Type 1, Class A & B • NCHRP Report 244 Series II
Packaging	<ul style="list-style-type: none"> • 1 Gallon (3.79 Liter) Units (4 per case) • 5 Gallon (18.93 Liter) Pails • 55 Gallon (208.20 Liter) Drums 	<ul style="list-style-type: none"> • 5 Gallon (18.93 Liter) Pails • 55 Gallon (208.20 Liter) Drums 	<ul style="list-style-type: none"> • 5 Gallon (18.93 Liter) Pails • 55 Gallon (208.20 Liter) Drums 	<ul style="list-style-type: none"> • 5 Gallon (18.93 Liter) Pails • 55 Gallon (208.20 Liter) Drums 	<ul style="list-style-type: none"> • 5 Gallon (18.93 Liter) Pails • 55 Gallon (208.20 Liter) Drums
Coverage	<ul style="list-style-type: none"> • Broomed Surface: Approximately 300 sq. ft./gal. (7.35 sq. m/L) • Troweled Surface: Approximately 500 sq. ft./gal. (12.26 sq. m/L) 	<ul style="list-style-type: none"> • 300 sq. ft./gal. (7.36 sq. m/L) 	<ul style="list-style-type: none"> • 300 sq. ft./gal. (7.36 sq. m/L) 	<ul style="list-style-type: none"> • Approximately 200 sq. ft./gal. (4.91 sq. m/L) 	<ul style="list-style-type: none"> • Approximately 150 ft.² gal (4.91 m²/L)
Usage	<p>May be used wherever a thicker film, with a medium to high sheen, is desired to bring out the natural beauty of concrete without discoloring, checking or peeling. May be applied to simultaneously cure, seal and dustproof new and old, interior and exterior, horizontal and vertical concrete surfaces.</p>	<p>Ideal for application on Portland cement concrete bridge decks, parking garage decks and ramps, or any concrete surface which allows the concrete to absorb water, de-icing salts or other destructive materials. May also be applied on wood to seal, protect and extend the life of the protected wood.</p>	<p>Ideal for use on bridge decks, parking garage decks, ramps or any other concrete surface exposed to water, de-icing salts or other destructive substances. Increases the durability of concrete to prolong its life.</p>	<p>Ideal for use in preventing the spalling and scaling of concrete surfaces. Use on bridge decks, parking garage decks, ramps and/or any concrete surface exposed to water, de-icing salts or other deleterious materials. Increases the durability of concrete to prolong its life.</p>	<p>PENCURE OTC is a unique, dual-action, non-yellowing, acrylic, concrete curing and sealing compound containing silane. PENCURE OTC is intended for use on fresh concrete only. The product is clear, transparent, and easy to apply. PENCURE OTC simultaneously forms a membrane for optimum moisture retention; its unique formulation, containing silane, also allows the product to chemically react and reduce the intrusion of water and salts into the concrete.</p>
Applications	Interior	•			
	Exterior	•	•	•	•
	Horizontal	•	•	•	•
	Vertical	•			•
	Fresh Concrete	•	•	•	•
Existing Concrete	•	•	•		

Construction Liquid Products

CONCRETE DENSIFIER & HARDENER		SEALING COMPOUNDS		
<p>LIQUI-HARD Concrete Densifier and Chemical Hardener MasterFormat: 03 05 00 Common Work Results in Concrete</p>	<p>LIQUI-HARD ULTRA Molecular Concrete Densifier and Chemical Hardener MasterFormat: 03 05 00 Common Work Results in Concrete</p>	<p>DECRA-SEAL NATURAL Water-Based Enhancer and Water Repellent Sealer MasterFormat: 03 39 23 Common Work Results in Concrete</p>	<p>DECRA-SEAL W/B Non-Yellowing Sealer for Decorative Concrete MasterFormat: 03 05 00 Common Work Results in Concrete</p>	<p>DECK-O-GRIP W/B Non-Yellowing, Slip-Resistant Sealer for Decorative Concrete and Concrete Pool Decks MasterFormat: 03 05 00 Common Work Results in Concrete</p>
<ul style="list-style-type: none"> • Penetrates deeply into concrete to densify and harden surfaces to prevent entry of moisture and other foreign matter. • Dustproofs and improves chemical, petroleum and abrasion resistance of treated surfaces. • Forms a permanent, attractive sheen with the ability to polish. • Protects against scratching or peeling. • Provides tough, protected surface that won't after-yellow, discolor or show pedestrian or vehicular traffic wear marks. 	<ul style="list-style-type: none"> • Intimate molecular reaction penetrates deeply into concrete to densify and harden surfaces to help prevent entry of moisture and other foreign matter. • Quick and easy, hassle-free application procedure (no flushing or rinsing required). • Does not require brushing into the surface or rinsing (except in puddle areas). • Improved freeze/thaw resistance. • Dustproofs and improves chemical, petroleum, and abrasion resistance of treated surfaces. • Provides a permanent, attractive sheen with the ability to polish. • Protects against scratching or peeling. 	<ul style="list-style-type: none"> • Enhances and enriches the colors of the substrate. • Does not create a glossy finish, preserving the natural look of the substrate. • Excellent product for sealing concrete pavers. • Matte finish. • Repels water. • Reduces water and salt penetration in the substrate. • Low VOC 	<ul style="list-style-type: none"> • Provides a totally clear membrane that will not yellow. • Seals all concrete surfaces, providing a glossy appearance and easier clean up. • Dustproofs concrete with a tough, durable film. • Helps minimize spalling of exterior concrete. • Provides good blush resistance in damp areas. • Applies easily. • Provides a clear, tough film, which improves abrasion and stain resistance. • Offers improved resistance to rain, sun, freezing temperatures, most acids and industrial chemicals, oil, grease, de-icing salts, and more. 	<ul style="list-style-type: none"> • Provides a totally clear membrane that will not yellow. • Seals all concrete surfaces, providing a glossy appearance and easier clean up. • Offers excellent slip-resistance for slippery surfaces. • Dustproofs concrete with a tough, durable film. • Helps minimize spalling of exterior concrete. • Applies easily. • Provides a clear, tough film, which improves abrasion and stain resistance.
<ul style="list-style-type: none"> • 5 Gallon (18.93 Liter) Pails • 55 Gallon (208.20 Liter) Drums 	<ul style="list-style-type: none"> • 5 Gallon (18.93 Liter) Pails • 55 Gallon (208.20 Liter) Drums 	<ul style="list-style-type: none"> • 1 Gallon (3.79 Liter) Cans • 5 Gallon (18.93 Liter) Pails • 55 Gallon (208.20 Liter) Drums 	<ul style="list-style-type: none"> • 1 Gallon (3.79 Liter) Cans • 5 Gallon (18.93 Liter) Pails 	<ul style="list-style-type: none"> • 1 Gallon (3.79 Liter) Containers • 5 Gallon (18.93 Liter) Pails
<ul style="list-style-type: none"> • Fresh (new) surface: 300 sq. ft./gal. (7.36 sq. m/L) • Existing (old) surface: 200 sq. ft./gal. (4.91 sq. m/L) 	<ul style="list-style-type: none"> • Fresh (Newly Placed) 650-800 sq. ft./gal. (15.95-19.63 sq. m/L) • Existing (Steel) 450-600 sq. ft./gal. (11.04-14.72 sq. m/L) • Existing (Broomed) 300-400 sq. ft./gal. (7.36-9.82 sq. m/L) • When used as a curing compound on newly placed concrete. <p>Note: Coverage rates may vary, depending on the finish and porosity of the concrete.</p>	<ul style="list-style-type: none"> • 50 – 300 ft.²/gal. (1.23 – 7.36 m²/L) 	<ul style="list-style-type: none"> • 300 - 600 ft.²/gal. (7.37 - 14.73 m²/L) 	<ul style="list-style-type: none"> • 300-600 sq. ft./gal. (7.37-14.73 sq. m/L) <p>*Coverage may vary due to porosity and condition of the concrete.</p>
<p>Recommended for use wherever hardening, dustproofing and improved chemical and abrasion resistant surfaces are required. Ideal applications include floors in industrial plants and warehouses, storage silos, sewage plants, chemical processing facilities, refineries and heavy pedestrian floor traffic areas, such as civic centers, sports arenas, stadiums, hospitals, airports and museums.</p>	<p>LIQUI-HARD ULTRA is recommended for use wherever hardened, dustproofed, and improved chemical and abrasion resistant surfaces are required. Ideal applications include floors in industrial plants and warehouses, storage silos, sewage plants, chemical processing facilities, refineries, and heavy pedestrian floor traffic areas, such as civic centers, sports arenas, stadiums, hospitals, airports, and museums. LIQUI-HARD ULTRA can successfully be used in conjunction with shake-on hardeners.</p>	<p>DECRA-SEAL NATURAL is low-VOC, water-based sealer that enhances the natural color and features of decorative concrete, pavers, unglazed tiles, and a variety of porous natural and artificial stone. DECRA-SEAL NATURAL is a penetrating water repellent that chemically bonds to the substrate, helping to increase the service life.</p>	<p>Designed for various applications, including exterior concrete surfaces, driveways, patios, swimming pool areas and exposed aggregate, as well as any exterior surface where protection and sealing of concrete is desired. Provides a durable, long-lasting finish that has improved resistance to chemicals, oil, grease, de-icing salts and abrasions. Designed for use with acid stain and decorative concrete surfaces.</p>	<p>DECK-O-GRIP W/B is designed for various applications, including exterior concrete surfaces, driveways, patios, swimming pool areas and exposed aggregate, as well as any exterior surface where protection and sealing of concrete is desired. Use on any exterior concrete surface provides a durable, long-lasting finish that has improved resistance to chemicals, oil, grease, de-icing salts and abrasions.</p>
<ul style="list-style-type: none"> • • • • • • 	<ul style="list-style-type: none"> • • • • • • 	<ul style="list-style-type: none"> • • • • • • 	<ul style="list-style-type: none"> • • • • • • 	<ul style="list-style-type: none"> • • • • • •

Quick Reference Selector for C

SEALING COMPOUNDS				
Product Name	DECK-O-SHIELD Concrete Deck, Waterfall and Natural Stone Sealer MasterFormat: 03 05 00 Common Work Results in Concrete	DECK-O-SHIELD PLUS Concrete Deck, Waterfall and Natural Stone Sealer MasterFormat: 07 19 16 Silane Water Repellents	INTRAGUARD Water-Based, Clear, Penetrating Sealing Compound for Salt Protection MasterFormat: 03 35 00 Concrete Finishing	PENTREAT 244-20 W/B Water-Based, Penetrating, Water Repellent, Silane Sealing Compound MasterFormat: 07 19 16 Concrete Finishing
Features/Benefits	<ul style="list-style-type: none"> • DECK-O-SHIELD is not a film-forming material - it penetrates the surface to form an integral barrier to moisture penetration. • Transparent, non-staining. • Surface appearance after application and complete drying is virtually unchanged. • Reduces entrapment of dirt particles and other contaminants that cause discoloration; inhibits soiling. • Protects against efflorescence and rust staining. • Helps resist stains from spills. • Protects against salt staining and "whitening" caused by salts in the water. 	<ul style="list-style-type: none"> • DECK-O-SHIELD PLUS is not a film-forming material - it penetrates the surface to form an integral barrier to moisture penetration. • Transparent, non-staining. • High solids content; one-coat application on most surfaces. • Surface appearance after application and complete drying is virtually unchanged. • Reduces entrapment of dirt particles and other contaminants that cause discoloration; inhibits soiling. • Protects against efflorescence and rust staining. • Helps resist stains from spills. 	<ul style="list-style-type: none"> • INTRAGUARD is not a film-forming material - it penetrates the surface to form an integral barrier to moisture penetration. • Transparent, non-staining. • Reduces entrapment of dirt particles and other contaminants that cause discoloration. • Helps protect properly placed and cured concrete from scaling and freeze thaw damage. • Protects against efflorescence and rust staining. • Helps resist stains from spills. • Water-based, VOC-compliant. • One component. 	<ul style="list-style-type: none"> • High-performance, breathable, penetrating, superior water repellent sealer. • Minimizes penetration of water and water-soluble salts that may damage concrete/masonry surface. • Reduces spalling of new concrete surfaces. • Will extend the life of concrete and masonry structures. • Penetrates deeply for maximum protection. • Chemically bonds to the substrate, preventing liquid absorption while allowing excellent vapor transmission. • Leaves no residue/Requires no cleaning after application.
Specifications				
Packaging	<ul style="list-style-type: none"> • 1 Gallon (3.79 Liter) Units • 5 Gallon (18.93 Liter) Pails 	<ul style="list-style-type: none"> • 1 Gallon (3.79 Liter) Units • 5 Gallon (18.93 Liter) Pails 	<ul style="list-style-type: none"> • 1 Gallon (3.79 Liter) Units • 5 Gallon (18.93 Liter) Pails 	<ul style="list-style-type: none"> • 5 Gallon (18.93 Liter) Pails • 55 Gallon (208.20 Liter) Drums • 275 Gallon (1041 Liters) Totes
Coverage	<ul style="list-style-type: none"> • Natural Stone** 75 - 175 ft²/gal • Stucco Surfaces 60 - 100 ft²/gal • Concrete 100 - 175 ft²/gal • Concrete Block** 50 - 100 ft²/gal** • Masonry 100 - 175 ft²/gal <p><small>**Always apply a test area to determine actual coverage rates. Coverage rates will vary greatly, due to the porosity of the substrate.</small></p> <p><small>**Due to porosity, certain stone and block applications may require a significant increase in coverage rates - possibly additional applications.</small></p>	<ul style="list-style-type: none"> • 300 – 475 sq. ft./gal 	<ul style="list-style-type: none"> • Approximately 50-200 ft.²/gal. (4.65-18.58 m²/L) <p>Coverage rate may vary depending on porosity of the concrete.</p>	<ul style="list-style-type: none"> • Approximately 125 ft.²/gal. (3.05 m²/L) <p>Coverage rate may vary depending on porosity of the concrete.</p>
Usage	<p>DECK-O-SHIELD weatherproofs and protects virtually all waterfalls, decks, porches, patios, and walkways around pools, including the following surfaces: natural stone, mortar joint, concrete, brick, concrete block and stucco. Another advantage DECK-O-SHIELD provides is that the product will not alter the color or tint of the surface after application. There is no need for worry when applying DECK-O-SHIELD, because the product will have no adverse effects on surface appearance after application.</p>	<p>DECK-O-SHIELD PLUS weatherproofs and protects virtually all porous surfaces, including decks, porches, patios, and walkways around pools. This includes the following surfaces: natural stone, mortar joint, concrete, brick, concrete block, stucco.</p>	<p>INTRAGUARD weatherproofs and protects virtually all exterior concrete surfaces, including concrete driveways, walkways, and parking lots. The product is designed to provide lasting protection from de-icing chemicals and moisture intrusion. Surfaces treated with INTRAGUARD will also be resistant to staining from oils, fuels, and common chemicals. The product can be used on vertical surfaces.</p>	<p>PENTREAT 244-20 W/B is a water-based, 20% active content silane penetrating sealer. PENTREAT 244-20 W/B is a hydrophobic, impregnating sealer that helps prevent chloride-induced corrosion of rebar, scaling, spalling, freeze-thaw damage, and other causes of debilitating concrete.</p>
Applications	Interior	•	•	•
	Exterior	•	•	•
	Horizontal	•	•	•
	Vertical	•	•	•
	Fresh Concrete			•
	Existing Concrete	•	•	•

Construction Liquid Products

SEALING COMPOUNDS	PREMIUM CONCRETE ENHANCER	SURFACE RETARDERS
<p>PENTREAT 244-40 W/B Water-Based, Penetrating, Water Repellent, Silane Sealing Compound MasterFormat: 07 19 16 Concrete Finishing</p>	<p>TIAH OTC Non-Yellowing Acrylic Sealing Compound MasterFormat: 03 05 00 Common Work Results in Concrete</p>	<p>BELLATRIX Premium Concrete Enhancer MasterFormat: 03 05 00 Common Work Results for Concrete</p>
<ul style="list-style-type: none"> • High-performance, breathable, penetrating, superior water repellent sealer. • Minimizes penetration of water and water-soluble salts that may damage concrete/masonry surface. • Reduces spalling of new concrete surfaces. • Will extend the life of concrete and masonry structures. • Penetrates deeply for maximum protection. • Chemically bonds to the substrate, preventing liquid absorption while allowing excellent vapor transmission. • Leaves no residue/Requires no cleaning after application. • Formulation also available with red fugitive dye. 	<ul style="list-style-type: none"> • Applies easily ... dries to the touch in 30-60 minutes. • Provides a clear, tough, easy-to-clean film which improves abrasion and stain resistance. • Offers improved resistance to rain and sun, freezing temperatures, most acids and industrial chemicals, oil, grease, de-icing salts, cleaning agents (except aromatic solvents), caustics, airborne soot, dust and other pollutants. • Excellent foot or vehicular traffic wearing qualities. • Can be recoated after thorough surface cleaning to restore original beauty. • Concrete can later be painted or covered with resilient flooring or carpeting, if desired. • VOC compliant ... meets U.S. EPA Architectural Coatings Rule requirements. 	<ul style="list-style-type: none"> • Permeable film allows moisture in cured concrete to evaporate. • Seals surface and provides optimum gloss. • Offers stain protection against many common stain-causing contaminants. • Produces a tough, uniform, breathable barrier for improved durability. • Dustproofs concrete • Provides excellent blush resistance in damp environments. • Applies easily and economically. • VOC compliant. • Protects the finish when used on polished concrete. • For both indoor and outdoor use. • Rejuvenates previously sealed or densified concrete.
		<p>N/A</p>
<ul style="list-style-type: none"> • 5 Gallon (18.93 Liter) Pails • 55 Gallon (208.20 Liter) Drums • 275 Gallon (1041 Liters) Totes 	<ul style="list-style-type: none"> • 1 Gallon Cans (4 per Carton) • 5 Gallon Pails • 55 Gallon Drums 	<ul style="list-style-type: none"> • 1 Gallon (3.79 Liter) Units (4 per Carton) • 5 Gallon (18.93 Liter) Pails • 55 Gallon (208.20 Liter) Drums
<p>• Approximately 125 – 250 ft.²/gal. (3.05 – 6.10 m²/L).</p> <p>Coverage rate may vary depending on porosity of the concrete.</p>	<p>• 300-600 sq. ft./gal. (7.37-14.73 sq. m/L)</p>	<p>• 500 – 1000 sq. ft./gal. (12.27 – 24.54 sq. m/L) Steel Troweled Concrete: 500-600 sq. ft. (12.27-14.73 sq. m) Polished Concrete: 1000-1500 sq. ft. (24.54-36.81 sq. m) *Coverage will vary due to texture, porosity and condition of the concrete.</p>
<p>PENTREAT 244-40 W/B is a water-based, 40% active content silane penetrating sealer. PENTREAT 244-40 W/B is a hydrophobic, impregnating sealer that helps prevent chloride-induced corrosion of rebar, scaling, spalling, freeze-thaw damage, and other causes of debilitating concrete.</p>	<p>TIAH OTC is used on driveways, patios, industrial floors, loading docks, swimming pool areas and exposed aggregate, as well as any exterior surface where protection and sealing of concrete is desired. TIAH OTC offers improved resistance to rain, sun, freezing temperatures, stains, most acids and industrial chemicals, oil, grease, de-icing salts, cleaning agents (except aromatic solvents) and caustics, as well as airborne soot, dust and other pollutants. TIAH OTC is to be used on existing concrete (not freshly placed) as a sealer, or in combination with the CS-309 line of curing and sealing compounds from W. R. MEADOWS, to create a complete flooring system.</p>	<p>While originally formulated to be used in conjunction with hardened concrete floor systems, such as W. R. MEADOWS LIQUI-HARD and the INDUROSHINE polished concrete system, BELLATRIX may also be utilized anywhere a clear, high-gloss, dual-action concrete protection system is desired. BELLATRIX is designed for use on previously sealed surfaces, as well as surfaces that have been previously stained or dyed and sealed. (Check compatibility with existing sealer prior to full application.)</p>
<ul style="list-style-type: none"> • • • • • • 	<ul style="list-style-type: none"> • • • • • • 	<ul style="list-style-type: none"> • • • • • •

Quick Reference Selector for C

FORM RELEASES

Product Name		DUOGARD® VOC-Compliant Form Release Agent MasterFormat: 03 11 00 Concrete Forming	DUOGARD II Water-Based Form Release Agent MasterFormat: 03 11 00 Concrete Forming	DUOGARD CITRUS Form Release Agent MasterFormat: 03 11 00 Concrete Forming	DUOGARD N.E. Form Release Agent MasterFormat: 03 11 00 Concrete Forming
Features/Benefits		<ul style="list-style-type: none"> Provides a better and cleaner cast when applied on pre-stressed and pre-cast concrete forms. Cuts stripping time to an absolute minimum. Reduces form cleaning and repairing. Increases wood form life ... prevents rust ... rustproofs metal forms. Minimizes concrete build-up on pavers, R/M trucks, mixers, spreader-finishers, buggies, chutes and other equipment. Prevents bonding between poured concrete and the form. 	<ul style="list-style-type: none"> Can be safely used inside or outside. Produces a better and cleaner cast when applied on prestressed and precast concrete forms. Cuts stripping time to an absolute minimum. Reduces form cleaning and repairing. Increases wood form life ... prevents rust ... rustproofs metal forms. Effectively minimizes concrete buildup on pavers, R/M trucks, mixers, spreader-finishers, buggies, chutes and other equipment. 	<ul style="list-style-type: none"> Pleasant citrus scent. Contains no diesel fuel. Produces a better and cleaner cast when applied on pre-stressed and pre-cast concrete forms. Cuts stripping time to an absolute minimum. Reduces form cleaning and repairing. Increases wood form life, prevents rust and rustproofs metal forms. Minimizes concrete build-up on pavers, R/M trucks, mixers, spreader-finishers, buggies, chutes and other equipment. 	<ul style="list-style-type: none"> Contains no diesel fuel. Produces a better and cleaner cast when applied on prestressed and pre-cast concrete forms. Cuts stripping time to an absolute minimum. Reduces form cleaning and repairing. Increases wood form life, prevents rust and rustproofs metal forms. Minimizes concrete build-up on pavers, R/M trucks, mixers, spreader-finishers, buggies, chutes and other equipment.
Specifications					
Packaging		<ul style="list-style-type: none"> 5 Gallon (18.93 Liter) Pails 55 Gallon (208.20 Liter) Drums 	<ul style="list-style-type: none"> 5 Gallon (18.93 Liter) Pails 55 Gallon (208.20 Liter) Drums 	<ul style="list-style-type: none"> 5 Gallon (18.93 Liter) Pails 55 Gallon (208.20 Liter) Drums 	<ul style="list-style-type: none"> 5 Gallon (18.93 L) Pails 55 Gallon (208.20 L) Drums
Coverage		<ul style="list-style-type: none"> 600-1500 sq. ft./gal. (14.7-36.8 sq. m/L), depending on the type and porosity of the form surface. 	<ul style="list-style-type: none"> 600 to 1500 sq. ft./gal. (14.73 to 36.82 sq.m./L), depending on the type and porosity of the form surface. 	<ul style="list-style-type: none"> 600 to 1500 sq. ft./gal. (14.7 to 36.8 sq. m/L), depending on type and porosity of form surface. 	<ul style="list-style-type: none"> 600-1500 ft²/gal. (14.7-36.8 m²/L), depending on type and porosity of form surface.
Usage		Can be used on various types of forms (wood, steel, fiberglass and aluminum, as well as fiber tubes). Increases the life of wood forms by penetrating into the wood to waterproof and prevent deterioration. Reduces maintenance requirements on metal forms by forming a rustproof film that makes the metal form essentially self-cleaning and rust-free. Minimizes concrete build-up. Will not stain or discolor concrete.	Can be used on various types of forms (wood, steel, as well as fiberglass, aluminum and fiber tubes). Increases the life of wood forms by penetrating into the wood to waterproof and prevent deterioration. Reduces maintenance requirements on metal forms because it forms a rustproof film that makes the metal form essentially self-cleaning and rust-free.	Can be used on various types of forms: wood, steel, fiberglass, and aluminum, as well as fiber tubes. Increases the life of wood forms by penetrating into the wood to waterproof and prevent deterioration. Reduces maintenance requirements on metal forms by forming a rustproof film that makes the metal form essentially self-cleaning and rust-free.	Can be used on various types of forms: wood, steel, fiberglass and aluminum, as well as fiber tubes. Increases the life of wood forms by penetrating into the wood to waterproof and prevent deterioration. Also reduces maintenance requirements on metal forms by forming a rustproof film that makes the metal form essentially self-cleaning and rust-free.
Applications	Interior		•		•
	Exterior	•	•	•	•
	Horizontal	•	•	•	•
	Vertical	•	•	•	•
	Fresh Concrete	•	•	•	•
	Existing Concrete				

Construction Liquid Products

CONCRETE SET ACCELERATORS		CONCRETE CLEANING		EVAPORATION RETARDANTS	
<p>HYDRASET Calcium Chloride Concrete Set Accelerator</p> <p>MasterFormat: 03 05 00 Common Work Results in Concrete</p>	<p>HYDRASET-FREE Non-Chloride Concrete Set Accelerator</p> <p>MasterFormat: 03 05 00 Common Work Results in Concrete</p>	<p>ULTRITE COATING REMOVER</p> <p>MasterFormat: 03 05 00 Cleaning of Cast-In-Place Concrete</p>	<p>ULTRITE CLEANER</p> <p>MasterFormat: 03 05 00 Cleaning of Cast-In-Place Concrete</p>	<p>EVAPRE Evaporation Retardant</p> <p>MasterFormat: 03 00 00 Concrete</p>	<p>EVAPRE-RTU Ready-to-Use Evaporation Retardant</p> <p>MasterFormat: 03 00 00 Concrete</p>
<ul style="list-style-type: none"> Accelerates initial set time one to three times faster than normal concrete and mortar. Aids in strength development. Speeds up hydration of cement. Increases workability of concrete or mortar mix in colder temperatures. Speeds construction due to reduced setting and curing time. Allows earlier removal of concrete forms or other protection. Permits earlier finishing. 	<ul style="list-style-type: none"> Accelerates initial set time one to three times faster than normal for concrete and mortar. Aids in strength development. Speeds up hydration of cement. Increases workability of concrete or mortar. Speeds construction due to reduced setting and curing time. Allows earlier removal of concrete forms or other protection. Permits earlier finishing. 	<ul style="list-style-type: none"> Easy to use. Removes many different types of coatings. Low odor. 	<ul style="list-style-type: none"> Easy to use. User friendly; low odor. Low VOC content. 	<ul style="list-style-type: none"> Significantly reduces plastic shrinkage and cracking caused by evaporation in low humidity, high temperatures and high winds. Allows use of lower slump and lower water to cement ratio concrete. Provides smooth and durable concrete flatwork. Reduces wind crusting, stickiness, and sponginess, which often cause poor and uneven surface texture. Allows finishing crews to adhere to established schedules. 	<ul style="list-style-type: none"> Significantly reduces plastic shrinkage and cracking caused by evaporation in low humidity, high temperatures and high winds. Allows use of lower slump and lower water to cement ratio concrete. Provides smooth and durable concrete flatwork. Reduces wind crusting, stickiness, and sponginess, which often cause poor and uneven surface texture. Allows finishing crews to adhere to established schedules.
<ul style="list-style-type: none"> ASTM C 494, Type C AASHTO M 194, Type C 	<ul style="list-style-type: none"> ASTM C 494, Type C AASHTO M 194, Type C 	<ul style="list-style-type: none"> Complies with all current federal, state, and local maximum allowable VOC requirements, including EPA, CARB, LADCO, OTC Phase I and II, and SCAQMD. 	<ul style="list-style-type: none"> Complies with all current federal, state, and local maximum allowable VOC requirements, including EPA, CARB, LADCO, OTC Phase I and II, and SCAQMD. 	N/A	N/A
<ul style="list-style-type: none"> 5 Gallon (18.93 Liter) Pails 55 Gallon (208.20 Liter) Drums 	<ul style="list-style-type: none"> 5 Gallon (18.93 Liter) Pails 55 Gallon (208.20 Liter) Drums 	<ul style="list-style-type: none"> 1 Gallon (3.8 Liter) Units (4/Carton) 5 Gallon (18.93 Liter) Pails 55 Gallon (208.20 liters) Drums 	<ul style="list-style-type: none"> 1 Gallon (3.8 Liter) Units (4/Carton) 5 Gallon (18.93 Liter) Pails 55 Gallon (208.20 liters) Drums 	<ul style="list-style-type: none"> 45 Ounce (1596.9 cm³) Containers 1 Gallon (3.8 Liter) Units 5 Gallon (18.93 Liter) Pails 55 Gallon (208 Liter) Drums 	<ul style="list-style-type: none"> 5 Gallon (18.9 liter) Pails 55 Gallon (208 liter) Drums
<ul style="list-style-type: none"> N/A 	<ul style="list-style-type: none"> N/A 	<p>Horizontal: 125 ft.2/gal. (3.06 m²/L)</p> <p>Vertical: 75 ft.2/gal. (1.84 m²/L)</p>	<p>75 – 200 ft.²/gal. (1.8 – 4.9 m²/L)</p> <p>Coverage is approximate and may vary</p>	<ul style="list-style-type: none"> One gallon (3.8 liters) mixed with nine gallons (34.2 liters) of water will cover 2000-4000 ft.2 (50-100 m²/L). 	<ul style="list-style-type: none"> 200 - 400 ft²/ gal.
<p>Recommended for use during cool and cold weather to accelerate the set time and reduce the risk of frozen mortar and concrete mixes. Can be used any time you want to accelerate the set time to decrease turnaround time.</p>	<p>Recommended for use during cool and cold weather to accelerate the set time and reduce the risk of frozen mortar and concrete mixes. Can be used any time you want to accelerate the set time to decrease turnaround time.</p>	<p>ULTRITE COATING REMOVER is an easy-to-use, soy-gel coating remover. This gel-type product effectively removes topical sealers, acrylics, latex, urethanes, enamels, some epoxies, and other single-component coatings. ULTRITE COATING REMOVER is safe, low-odor, and non-caustic.</p>	<p>ULTRITE CLEANER is a ready-to-use cleaner intended for use with ULTRITE COATING REMOVER from W. R. MEADOWS. This product is the second step of the two-step coating removal process.</p>	<p>Ideal for use as an evaporation retardant for concrete surfaces where the evaporation rate exceeds the rate of bleeding. Can be used with the MEADOW-PATCH® and MEADOW-CRETE® lines of repair mortars. Can also be used with condensed silica fume concrete, concrete containing fly ash and most other cementitious products.</p>	<p>Ideal for use as an evaporation retardant for concrete surfaces where the evaporation rate exceeds the rate of bleeding. Can be used with condensed silica fume concrete, concrete containing fly ash and all cementitious products.</p>
•	•	•	•	•	•
•	•	•	•	•	•
•	•	•	•	•	•
•	•	•	•	•	•
•	•	•	•	•	•



Project: US Highway 53
Location: Duluth, Minnesota, USA
Product: 2255-WHITE
Contractor: Shafer Contracting Co., Inc.
Scope: 125,000 square yards



W. R. MEADOWS, INC.
 P.O. Box 338 • Hampshire, IL 60140-0338
 Phone: 847/214-2100 • Fax: 847/683-4544
 1-800-342-5976
 www.wrmeadows.com • info@wrmeadows.com

HAMPSHIRE, IL / CARTERSVILLE, GA / YORK, PA
 FORT WORTH, TX / BENICIA, CA / POMONA, CA
 GOODYEAR, AZ / MILTON, ON / SHERWOOD PARK, AB



uction Liquid Products



Project: Children's Museum of Phoenix
Location: Phoenix, Arizona, USA
Contractor: Decorative Concrete Staining & Scoring, Inc.
Product: ACRY-LOK™, BELLATRIX®, DECRA-SEAL™, FLOOR-TOP® STG, LIQUI-HARD® ULTRA, MEADOW-PATCH® T2, REZI-WELD™ LV
Scope: 1,800 sf



This project is a renovation of the third oldest building in Phoenix. Originally, this building was the Monroe School; it is now the Children's Museum of Phoenix. This is a renovation of their art studio. The original slab was still present, but has a poorly placed topping.



W. R. MEADOWS, INC.
 P.O. Box 338 • HAMPSHIRE, IL 60140-0338
 Phone: 847/214-2100 • Fax: 847/683-4544
 1-800-340-0976
 www.wrmeadows.com

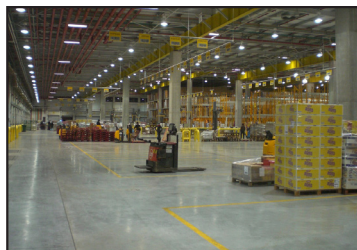
HAMPSHIRE, IL / CARTERSVILLE, GA / YORK, PA
 FORT WORTH, TX / BENICIA, CA / POMONA, CA
 GOODYEAR, AZ / MILTON, ON / ST. ALBERT, AB



Project: Nestle Factory
Location: Shoham Industrial Zone, Airport City, Israel
Consultant: MonoFloor
Salesperson: Mark Vogel
Product: LIQUI-HARD® Concrete Densifier and Chemical Hardener
Size: 390,000 sf



LIQUI-HARD is a ready-to-use, colorless liquid, formulated with chemically reactive raw materials to harden and dustproof concrete. When properly applied, LIQUI-HARD will offer substantial improvement in abrasion and chemical resistance and will significantly improve the durability of the concrete surface when compared to untreated concrete. In addition to the densifying and hardening action, LIQUI-HARD also solidifies the concrete, eliminating dusting and pitting.



W. R. MEADOWS, INC.
 P.O. Box 338 • HAMPSHIRE, IL 60140-0338
 Phone: 847/214-2100 • Fax: 847/683-4544
 1-800-340-0976
 www.wrmeadows.com

HAMPSHIRE, IL / CARTERSVILLE, GA / YORK, PA
 FORT WORTH, TX / BENICIA, CA / POMONA, CA
 GOODYEAR, AZ / MILTON, ON / ST. ALBERT, AB



GUARDIAN OF THE PAVEMENT



CONSTRUCTION LIQUIDS

Ideal applications:

- Highways
- Airports
- Street and Curb Paving
- Commercial and Industrial Surfaces
- Sidewalks
- Patios
- Parking Decks
- Driveways
- Parking Areas



If you need more information on our complete line of construction liquids, here are four quick and easy access points:

- Visit our comprehensive website: www.wrmeadows.com
- Contact W. R. MEADOWS, INC. via email: info@wrmeadows.com
- Call toll free: 1-800-342-5976
- Fax: 1-847-683-4544

follow us:

- @wrmeadows
 - facebook.com/wrmeadows
 - [w-r-meadows-inc](https://in.w-r-meadows-inc)
 - wrmeadowsinc
 - wrmeadowsinc
- #wrmeadows



W. R. MEADOWS, INC.
 P.O. Box 338 • Hampshire, IL 60140-0338
 Phone: 847/214-2100 • Fax: 847/683-4544
 1-800-342-5976
www.wrmeadows.com • info@wrmeadows.com

HAMPSHIRE, IL / CARTERSVILLE, GA / YORK, PA
 FORT WORTH, TX / BENICIA, CA / POMONA, CA
 GOODYEAR, AZ / MILTON, ON / SHERWOOD PARK, AB